

## IX Series

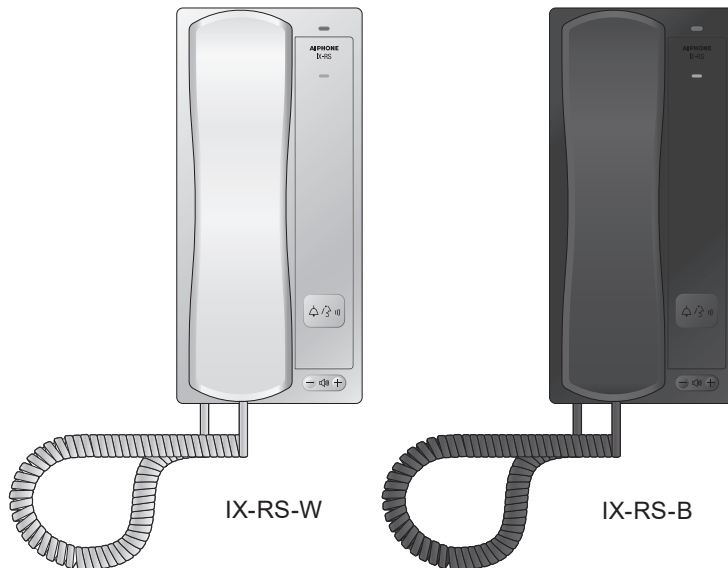
Handset Sub Station

IX-RS-W

IX-RS-B

## Operation Manual

Software version 3.00 or later







### Important

- Read this "Operation Manual" prior to usage to ensure safe and correct operation. Keep this in a safe place for future reference.
- The illustrations used in this manual may differ from the actual product.

## Literature information

The important information concerning correct operation and what you should observe is marked with the following symbols.

 <b>Warning</b>	This symbol means that operating the station incorrectly, or ignoring these precautions may cause severe injury or death.
 <b>Caution</b>	This symbol means that operating the station incorrectly, or ignoring these precautions may cause severe injury or property damage.
 <b>Important</b>	This symbol is intended to alert the user to important instruction. Please read and understand before proceeding.
 <b>Note</b>	Indicates tips and additional information for operation.

- Terms and button names displayed on the station and PC screens are indicated as [XXXX].
- Page reference are shown as "[Title \(→ page XX\)](#)", ([→ page XX](#)), or [page XX](#).
- The illustrations and images used in this manual may differ from the actual items.
- VoIP Phones and IX system stations are referred to collectively as "Stations."

## Precautions



### Warning

Negligence could result in death or serious injury.



**Keep the station away from liquid.**

This may result in fire or electrical shock.



**Keep the station away from flammable materials.**

If this happens, remove the LAN cable from the station. This may result in fire or electrical shock.



**If there is smoke, abnormal odor, abnormal sound, or if the station is damaged, immediately disconnect the LAN cable from the station.**

This may result in fire or electrical shock.



**Do not, under any circumstances, open the station.**

Voltage within some internal components may cause electrical shock.



**Do not disassemble or modify the station.**

This may result in fire or electrical shock.



### Caution

Negligence could result in injury to people or damage to property.



**Do not attempt to cover, insulate, or coat the station in any way.**

This may result in fire or malfunction.



**When testing chime volume and ringtone volume, do not hold the handset close to your ear.**

May cause harm to the ear if a sudden loud noise is emitted.



**Do not put your ear close to the speaker when using the station.**

May cause harm to the ear if a sudden loud noise is emitted.

# Precautions on operation

### Requests

- Keep the unit more than 1m (3.3') away from radio or TV set.
- Keep the station at least 20 cm (7-7/8") away from wireless devices such as wireless routers, or cordless telephones. These devices may cause the image or sound distortion.
- When making hands-free calls, talk within 30cm (12") or less from the station. If you stand too far away, it may be difficult for the other person to hear the communication.
- As to other 3rd party devices (such as sensor, detectors, door releases) used with this system, comply with the Specifications and Warranty conditions that the manufacturers or venders present.
- Be sure to receive and store the setting file from the person who configured the system. If the setting file is lost, recovery may not be possible and creating a new setting file may be required.

### Notices

- Aiphone is not to be held responsible for any and all damages resulting from content or specifications of this product.
- Aiphone is not to be held responsible for any and all damages resulting from malfunctions, defects, or misuse of this product.
- This station cannot be used during power outages.
- If the station is used in areas where there are business-use wireless devices such as a transceiver or mobile phones, it may cause malfunction.
- This station is designed for indoor use only. Do not use at outdoor locations.
- This station is not meant to protect lives or property. Aiphone is not to be held responsible for any and all resulting serious accidents, disaster accidents, or physical damage.
- The handset and the station may become slightly warm. However, this is not a malfunction.
- Hands-free calls are a method of automatically switching between the transmitter and receiver so that the louder of the two is prioritized, making it audible by the quieter of the two. If the surrounding area is loud, the call may be interrupted, making it difficult to respond.
- During communication, the voice may not come through clearly when speaking before the other party has finished talking. Communication will proceed smoothly when waiting until the other party has finished before speaking.
- The noise reduction function may determine that certain tones are noise and cut transmission of those tones. This is not a malfunction.
- This station is for installations on walls and vertical surfaces only.
- When wall-mounted, the top of the station may darken. This does not indicate a malfunction.
- Station maybe unoperatable while updating the system settings.
- If communication becomes congested or calls are made from multiple Video Door Stations in the system, the audio could drop, become delayed, or otherwise not operate normally.
- Aiphone assume no responsibility for damages as a result of delayed or unusable services, which were due to failures in network equipment, communication services by Internet and cellular phone companies, line interruptions, communication failures, or inaccuracies or omissions in transmission unit.
- Aiphone is not to be held responsible for any damages resulting from customer PINs or other transmitted information being leaked due to interception, unauthorized access, or other reasons along the communication path through the Internet.
- It is the customer's responsibility to ensure that their computer is secure. Aiphone is not liable for security failures.
- Available functions and services are limited according to the specifications of the installed system.
- If there is no power for 30 minutes or more, the date and time return to default.



# Table of contents

<b>1</b>	<b>Precautions</b>	
	Literature information .....	2
	Literature information .....	2
	Precautions .....	3
	Precautions .....	3
	Precautions on operation .....	4
<b>2</b>	<b>Before Using</b>	
	Part Names .....	7
	Part Names .....	7
	Status Indicators .....	8
	Status Indicators .....	8
	Answering a call .....	10
	Answering a call .....	10
<b>3</b>	<b>How to use</b>	
	Placing / Answering a Call .....	12
	Placing a call .....	12
	Use an external device to place a call .....	14
	Answering a call .....	16
	Receiving a page .....	18
	Receiving a page .....	18
	Operation while placing a call .....	20
	Unlocking a door .....	20
	Other functions .....	21
	Playing chimes using a schedule .....	21
	Sending an email .....	22
<b>4</b>	<b>Settings and Adjustments</b>	
	Station programming .....	23
	Station Programming .....	23
	Station Information .....	31
	Network settings .....	35
	System Information .....	36
	Call Settings .....	38
	Option Input / Relay Output Settings .....	48
	Function Settings .....	50
	Station Settings .....	61
	Maintenance .....	68
<b>5</b>	<b>Other</b>	
	Appendix .....	69
	Specifications .....	69
	Maintenance .....	69

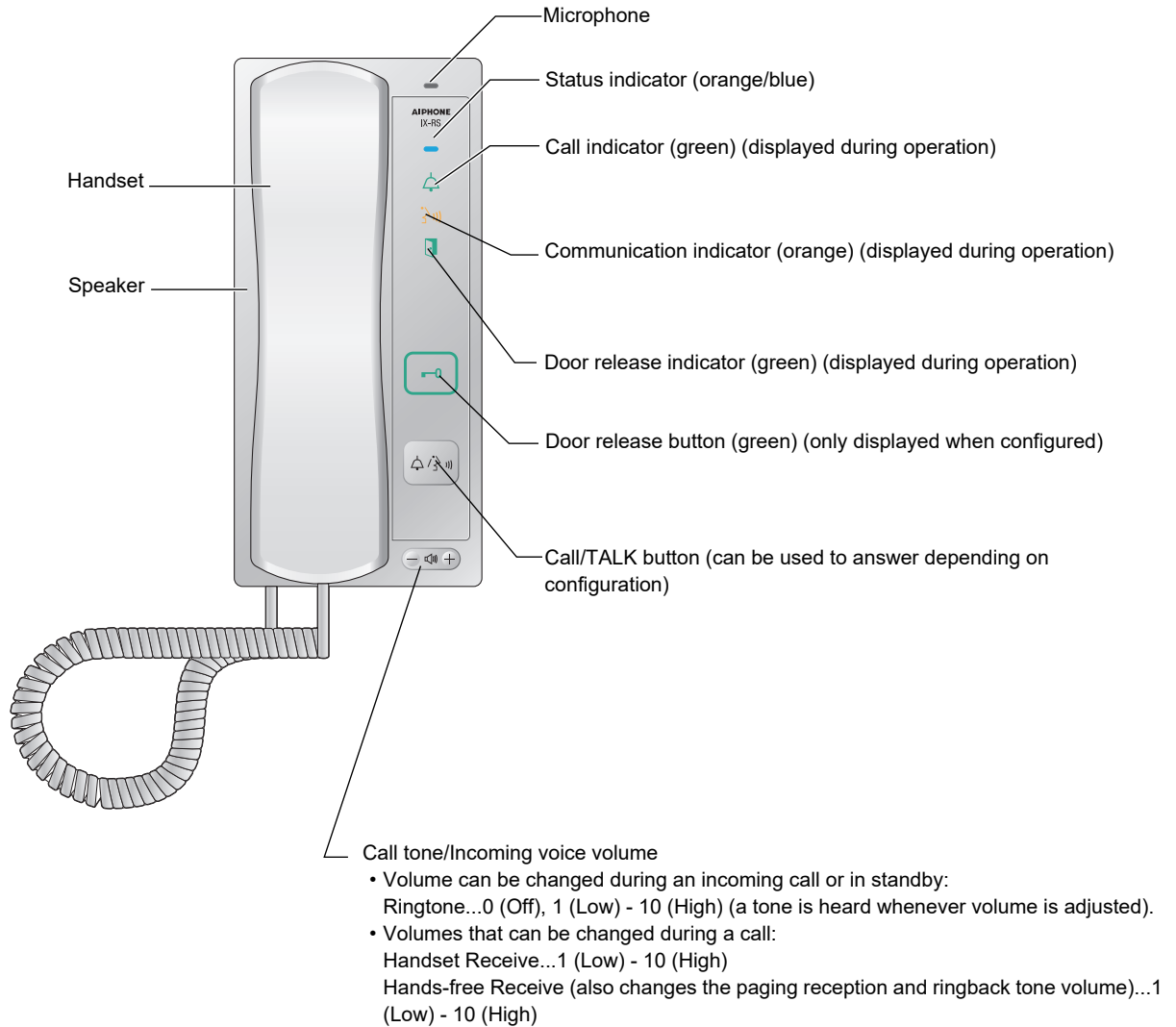
**Table of contents**

Notice regarding the software ..... 70  
Notice regarding the software ..... 70  
FOR PROPER USE OF THE STATION ..... 74  
REGULATIONS ..... 74  
WARRANTY ..... 75

## Part Names

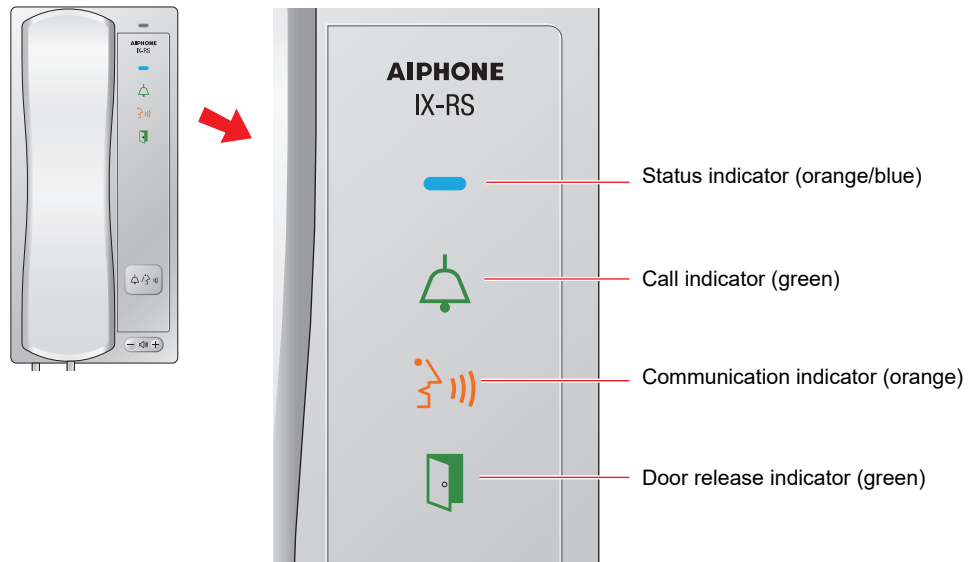
### Handset sub stations IX-RS-W and IX-RS-B

The illustrations use IX-RS-W as an example.



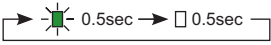
# Status Indicators

### Handset Sub Stations IX-RS-W and IX-RS-B



☀: On, □: Off

Name	Status (Pattern)	Description
Status indicator	Orange flashing ☀ 0.75 sec → □ 0.75 sec	Booting
	☀ 0.25 sec → □ 0.25 sec	Device error, Startup error
	☀ 0.5 sec → □ 4 sec	Communication failure
	☀ 1 sec → □ 0.25 sec → ☀ 0.25 sec → □ 0.25 sec → ☀ 0.25 sec → □ 0.25 sec	Firmware version updating
	☀ 1 sec → □ 0.25 sec → ☀ 0.25 sec → □ 0.25 sec	Initializing
Blue light	☀	Standby
Blue flashing	☀ 1sec → □ 1sec Repeat 3 times, then turn on	Calling destination busy
	☀ 0.25sec → □ 0.25sec → ☀ 0.25sec → □ 0.75sec	Incoming call
	☀ 2sec → □ 2sec	Incoming paging
	☀ 2sec → □ 1sec	Being monitored (may be disabled)
Call indicator	☀ 0.25sec → □ 0.25sec	Outgoing calling
Communication indicator	☀	In communication

Name	Status (Pattern)		Description
Door release indicator	Green flashing		Door releasing <sup>*1</sup>

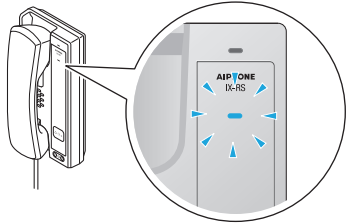
- \*1 Flashes when the door release contact is triggered.  
If door release timeout is set to 3 seconds or less, it will flash at a 3 second interval.

# Answering a call

### Answering a call with the handset

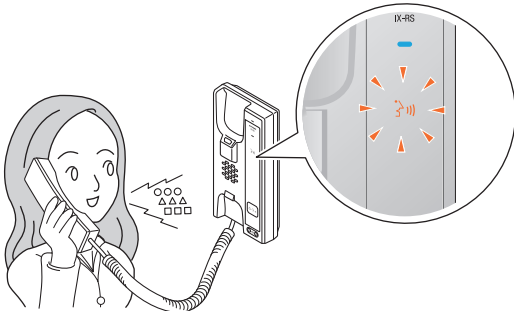
#### 1. Receive a call.

- The status indicator will flash blue.



#### 2. Lift up the handset and speak with the other party.

- The status indicator will turn ON, and the communication indicator will turn ON.



#### 3. When the communication ends, hang up handset.

- The communication indicator will turn OFF.
- Depending on the setting, the call may be ended by pressing the **[Call]** button.

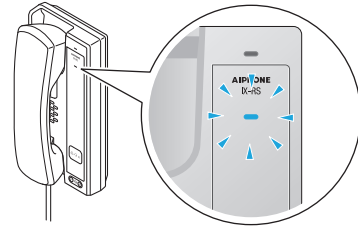


### Receiving a call with hands-free

This can be used when answering with the **[Call]** button is enabled via administrator setting.

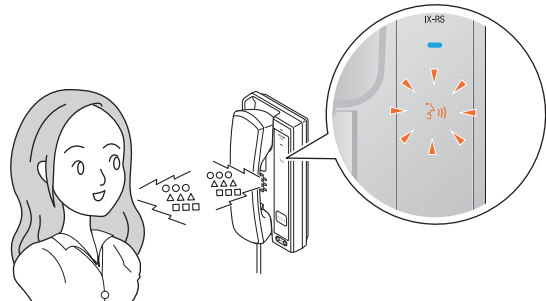
#### 1. Receive a call.

- The status indicator will flash blue.



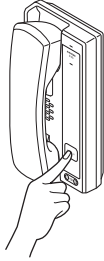
#### 2. Press the **[Call]** button and speak with the other party.

- The status indicator will turn ON, and the communication indicator will turn ON.



### 3. When the communication ends, press the **[Call]** button.

- The communication indicator will turn OFF.



#### Note

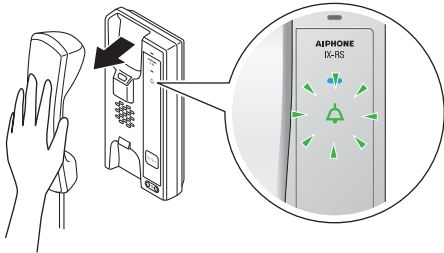
- Lifting the handset while talking hands free can switch to the handset call mode. Cannot switch a handset call to a hands-free call.
- When the ambient noise is loud, it may difficult to listen or talk hands-free.

### Placing a call

#### Placing a call with the handset

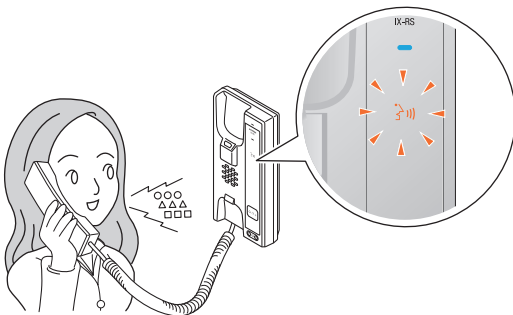
##### 1. Lift the handset.

- The ringback tone plays from the speaker on the handset.
- The call indicator will flash.



##### 2. Speak when the other party answers.

- The call indicator will turn OFF, and the communication indicator will turn ON.



##### 3. When the communication ends, hang up handset.

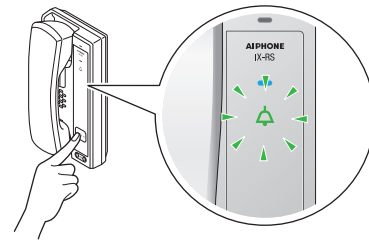
- The communication indicator will turn OFF.
- Depending on the setting, the call may be ended by pressing the **[Call]** button.



#### Press the **[Call]** button to place a call.

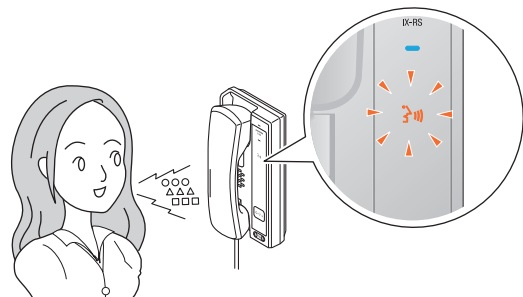
##### 1. Press **[Call]** button.

- The ringback tone plays from the built-in speaker.
- The call indicator will flash.
- Depending on the setting (administrator), the outgoing call may be ended by pressing the **[Call]** button.



##### 2. Speak when the other party answers.

- The call indicator will turn OFF, and the communication indicator will turn ON.
- Lift the handset to switch to handset communication.





### 3. To end communication, pick up the handset and hang up.

- The communication indicator will turn OFF.
- Depending on the setting, the call may be ended by pressing the **[Call]** button.

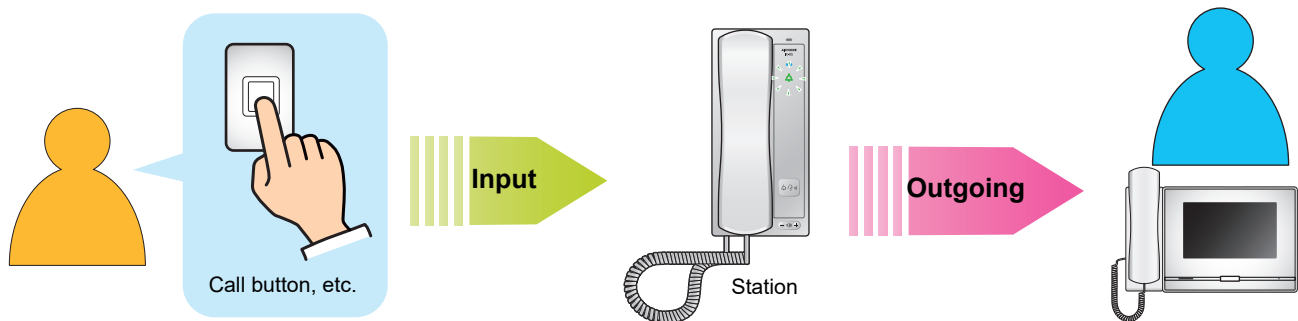


#### Note

- The call is placed using the priority that was set during programming.
- The call ring timer and the ringback tone count may vary depending on the settings.
- When calling a VoIP Phone, this will be the shorter time of the time set for "Call Timeout" or the call duration configured on the IP-PBX.
- The ringback tone may not be played, depending on the settings.
- Depending on the settings, communication sounds may play from separately installed speakers.
- A call start notification tone or message may play when the call starts, depending on the settings.
- If the call duration configured on this station (for calls with a VoIP Phone, the call duration configured on the VoIP Phone) elapses, the call will automatically end. A notification tone will play approximately 10 seconds prior to the call ending. The notification tone may not play, depending on the settings.
- If a page with a higher priority is received from another station while making an outgoing call or during communication, the outgoing call or call will be interrupted and the station will switch to the page.
- If Change Destination by Time Delay or a schedule is set, outgoing calls will be placed according to the setting. ([→page 38](#))
- If the call destination includes a VoIP Phone configured to automatically answer a call, the VoIP Phone will automatically answer.

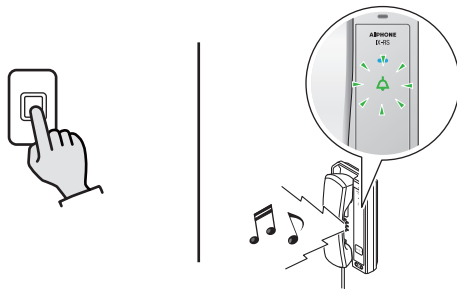
# Use an external device to place a call

Use an external device (sensor, call button, etc.) to place a call to a pre-determined location.



### 1. Activate the external device

- The ringback tone will play from the speaker of the station.
- The call indicator will flash.



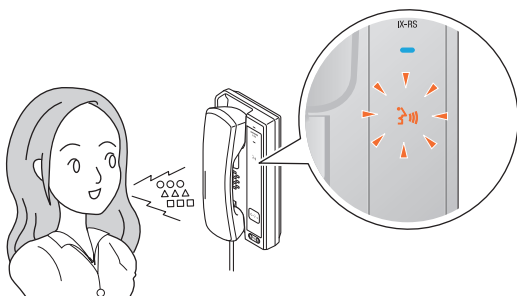
### 3. To end communication, pick up the handset and hang up.

- The communication indicator will turn OFF.
- Depending on the setting, the call may be ended by pressing the **[Call]** button.



### 2. Speak when the other party answers

- The call indicator will turn OFF, and the communication indicator will turn ON.
- Lift the handset to switch to handset communication.



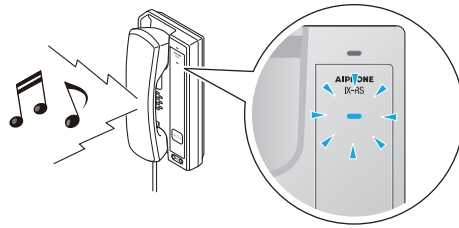


### Note

- The call is placed using the priority that was set during programming.
- The outgoing call timer and the calling tone count may vary depending on the settings.
- When calling a VoIP Phone, this will be the shorter time of the time set for "Call Timeout" or the call duration configured on the IP-PBX.
- The ringback tone may not be played, depending on the settings.
- Depending on the settings, communication sounds may play from separately installed speakers.
- A call start notification tone or message may play when the call starts, depending on the settings.
- If the call duration configured on this station (for calls with a VoIP Phone, the call duration configured on the VoIP Phone) elapses, the call will automatically end. A notification tone will play approximately 10 seconds prior to the call ending. The notification tone may not play, depending on the settings.
- If a page with a higher priority is received from another station while making an outgoing call or during communication, the outgoing call or call will be interrupted and the station will switch to the page.
- If the call destination includes a VoIP Phone configured to automatically answer a call, the VoIP Phone will automatically answer.

# Answering a call

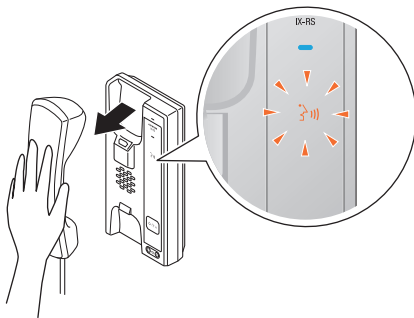
When receiving a call, the ringtone sounds and the status indicator flashes blue.



### Answering a call with the handset

**1.** When receiving a call, lift the handset.

- The status indicator will turn ON, and the communication indicator will turn ON.



**3.** To end communication, hang up the handset

- The communication indicator will turn OFF.
- Depending on the setting, the call may be ended by pressing the **[Call]** button.



**2.** Speak with the other party.

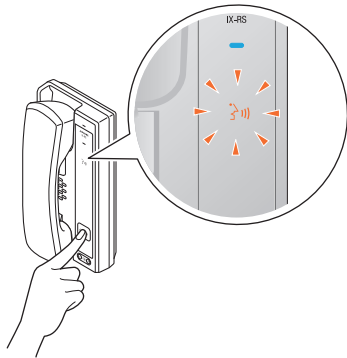


### Answering a call using the [Call] button

This can be used if Auto Answer ([→page 46](#)) is set to "OFF" and answering with the [Call] button is enabled via administrator setting.

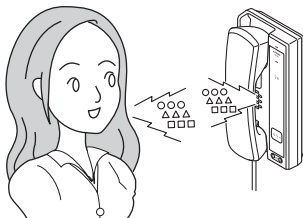
#### 1. When receiving a call, press the [Call] button.

- The status indicator will turn ON, and the communication indicator will turn ON.



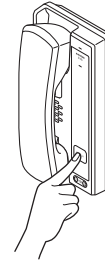
#### 2. Speak with the other party.

- Lift the handset to switch to handset communication.



#### 3. To end communication, press the [Call] button.

- The communication indicator will turn OFF.



#### Note

- If Auto Answer ([→page 46](#)) is set to "ON," the device will automatically answer when it receives a call.
- Depending on the settings, communication sounds may play from separately installed speakers.
- Depending on the settings, it may answer a call using separately installed switches.
- A call start notification tone or message may play when the call starts, depending on the settings.
- If the call duration configured on the other station (for calls with a VoIP Phone, the call duration configured on the VoIP Phone) elapses, the call will automatically end. A notification tone will play approximately 10 seconds prior to the call ending. The notification tone may not play, depending on the settings.
- If a page with a higher priority is received from another station during communication, the call will be interrupted and the station will switch to the page.
- If a page or a call with a higher priority is received from another station while making an outgoing call, the outgoing call will be interrupted and the station will switch to the page or call with a higher priority.
- The ringtone and ringtone count may differ, depending on the settings.
- The ringtone may not be played, depending on the settings.

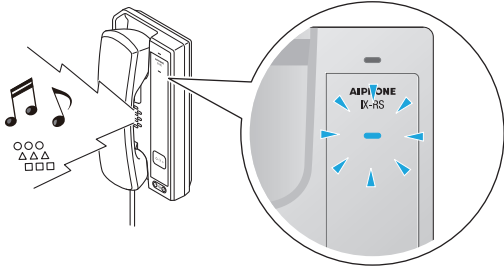
### Receiving a page

Paging will begin after the paging pretone.

#### Answering a page with the handset

**1.** The paging pretone will ring, then paging will begin.

- The status indicator will flash blue.



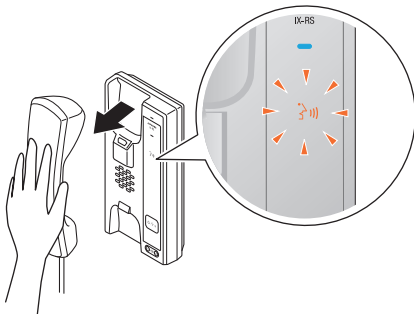
**4.** To end a page, hang up the handset

- The communication indicator will turn OFF.
- Depending on the setting, the call may be ended by pressing the **[Call]** button.



**2.** While receiving a page, lift the handset.

- The status indicator will turn ON, and the communication indicator will turn ON.



**3.** Speak with the other party.

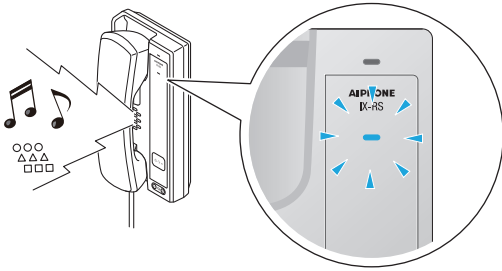


### Answering a page using the [Call] button

This can be used when Answer Call is enabled via Administrator setting.

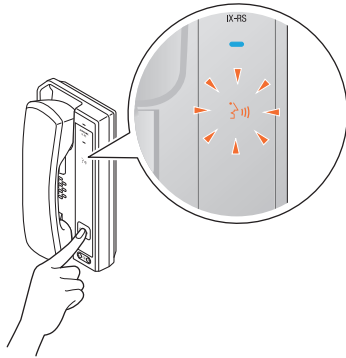
**1.** The paging pretone will ring, then paging will begin.

- The status indicator will flash blue.

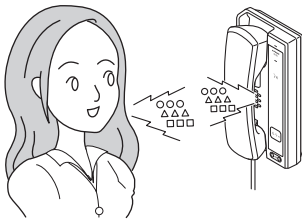


**2.** While receiving a page, press [Call] button.

- The status indicator will turn ON, and the communication indicator will turn ON.

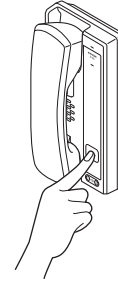


**3.** Speak with the other party.



**4.** To end a page, press the [Call] button.

- The communication indicator will turn OFF.



### Note

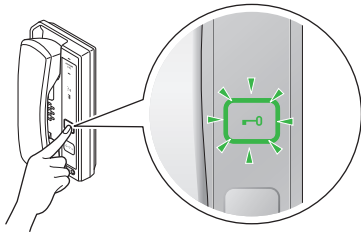
- If the [Call] button is pressed and an outgoing call is made during paging, paging may be canceled and the outgoing call is placed, depending on the priority.
- The paging pretone may not sound, depending on the settings.
- Depending on the settings, the paging pretone and the paging audio may play from separately installed speakers.
- A call start notification tone or message may play when the call starts, depending on the settings.
- If the call duration set on this station elapses, the call will automatically end. A notification tone will play approximately 10 seconds prior to the call ending. The notification tone may not play, depending on the settings.
- If a page with a higher priority is received from another station when paging or during a call, the call or page will be interrupted and the station will switch to the page with the higher priority.
- Depending on the IX-MV7-\* configuration, it may not be possible to answer if an urgent page is received.
- If a paging pretone with a long duration is set, the beginning of the paging tone may be cut.

# Unlocking a door

An electric lock can be released during communication with a station. This feature must be enabled in the administrator settings.

## 1. Press **[Door release]** button during communication

- The door release button will flash. The door release indicator flashes when the electrical lock connected to this station is unlocked.



### Note

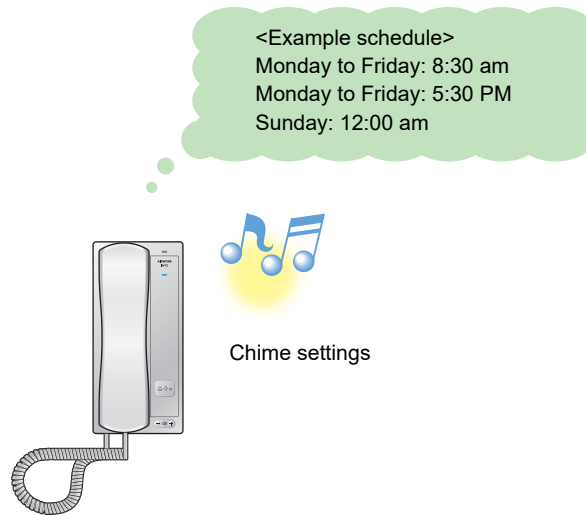
- Depending on the settings, the door may not be released even if the **[Door release]** button is displayed.
- If the door cannot be released, an error tone will be played.
- Depending on the settings, pressing the door release button a second time when the door is already released will extend the door release duration.



## Playing chimes using a schedule

Configure the station to play a chime tone on the configured schedule.

Refer to "Configuring the device on a PC" - "[Chime \(→page 57\)](#)" to configure chimes.

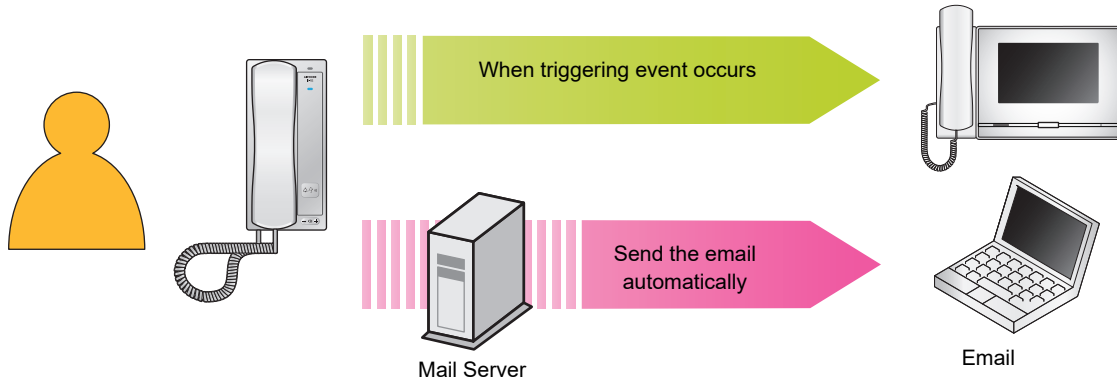


### Note

- If a call or page is received while the chime is playing, the chime will be canceled.
- The chime will not play when placing a call, receiving a call, receiving a page, or communication.

## Sending an email

An email can be sent to pre-registered email addresses using Email Event Trigger. For how to configure email settings, refer to ["Email \(→page 51\)"](#).



Example of sending email:

When placing a call to a station (Station Number "001") belonging to group number "01" from this station (Station Number: 003, Station Name: handset sub station 3, Location: machine room) with the "Urgent" priority.

Source	△△△△@△△△△△.com
Date and time	11/20/2018 7:22
Recipient CC	xxxx@xxxxx.com
Subject Text	003 Handset sub station 3 Urgent Outgoing Call
Description	A call was made at [20181120 07:21:40].  Source Station Number: [003] Source Station Name: [Handset Sub Station 3] Source Station Location: [Machine Room] Call Priority: [Urgent] Destination group number: [01] Destination Group Name: [Call Button] Destination Station Number: [001]

**Note**

- "UTF-8" is used to encode the "Subject." Characters may display incorrectly depending on the email client. To avoid this, set the encoding method to "UTF-8."

## Station Programming

Connect to the same network as the Door Station and manage the settings from PC web browser. If the Expanded System setting has been set to "Enable" in the Admin Settings, the setting cannot be set using a PC.

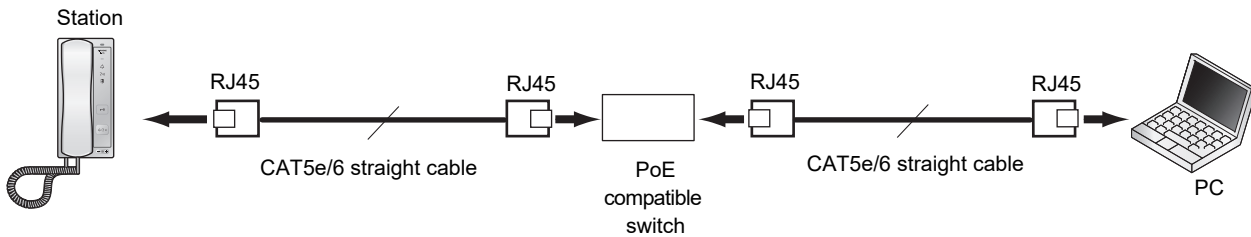
### System requirements

The programming PC must meet the following requirements to proceed.

Network	Ethernet (10BASE-T, 100BASE-TX)
Web browser	Microsoft Edge / Internet Explorer 10.0, 11.0 / Mozilla Firefox 59 or 60 (TLS1.0, 1.1, or 1.2 enabled)

### Connecting to a PC

Using a Cat5e/6 "Straight-Through" cable, connect the station and PC to the same PoE switch or injector.



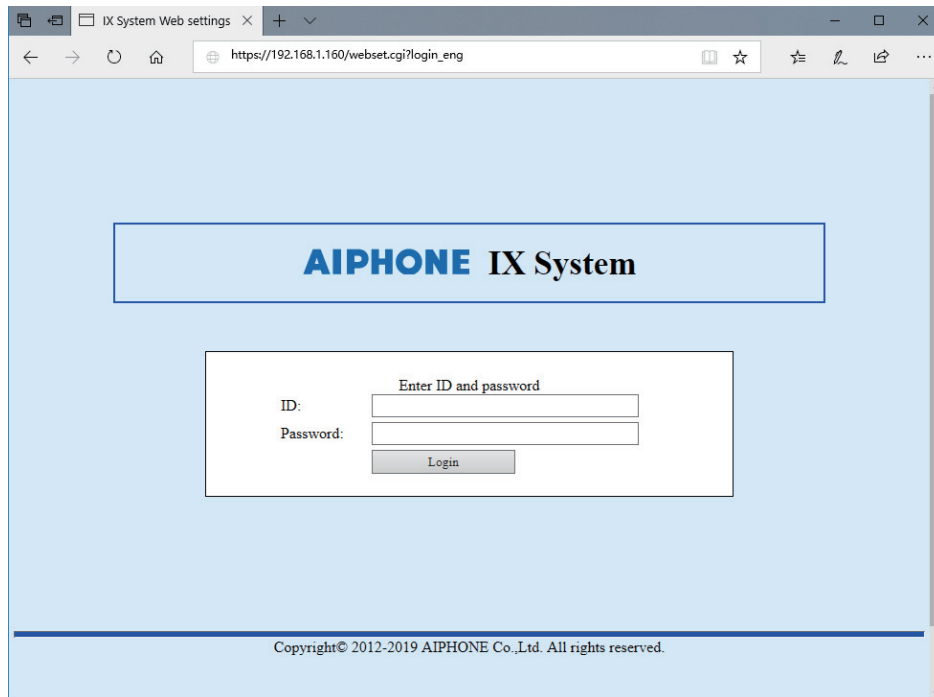
### Login to this station

1. Start the PC and open one of the before mentioned web browsers.
2. Enter the address below into the web browser address bar.
  - IPv4 example - <https://IP address of this device/webset.cgi?login>
  - IPv6 example - [https://\[IP address of this device\]/webset.cgi?login](https://[IP address of this device]/webset.cgi?login)
  - If a certificate error window is displayed, click **[Go on to the webpage]**. To prevent it from appearing, the administrator will need to disable it. Contact your system administrator.
  - Language selection window will be displayed.
3. Select a language

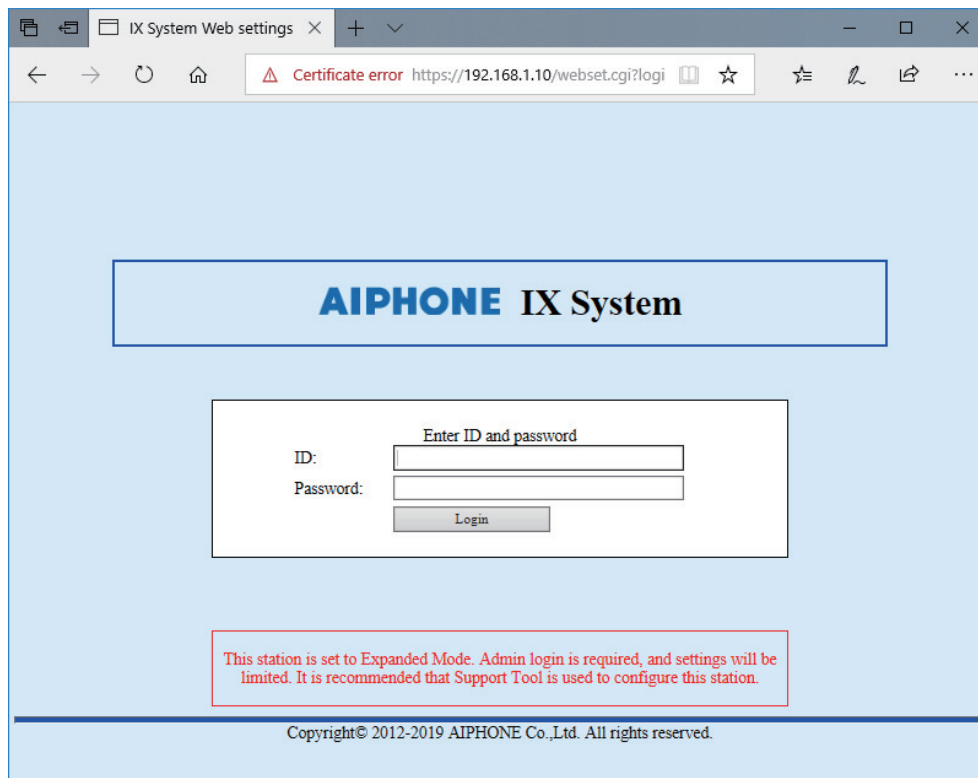


### 4. Enter the ID and password, and click **[Login]**

- Default values
  - ID: user
  - Password: user



- If the Expanded System setting is set to "Enable," the following is displayed on the Login screen.



- This indicates the setting window.



### Note

- Do not login multiple times using multiple browsers at one time on the same PC.
- The default IP address and Subnet mask values are:
  - IP Address: 192.168.1.160
  - Subnet Mask: 255.255.255.0
- Contact the system administrator if the IP address or subnet mask for the device is not known.

### Setting window

When accessing the web server of the station, the following setting window will appear. The station can be configured in this window.

- Depending on PC and OS being used, the window may be slightly different.
- After configuring the station, confirm its operation by referring to the "Operation Manual (this document)."

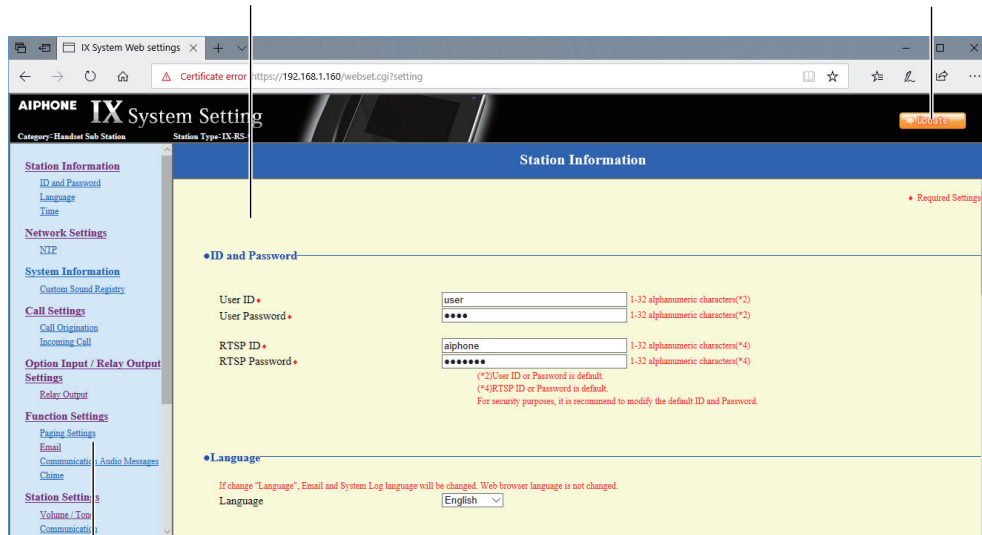
<Settings screen example>

Setting window:

This indicates the setting window of the title selected.

Update button

Click this button to update the station settings.



Setting menu:

Shows all items that can be configured. Click the title to be configured and the appropriate setting window will display.

## How to configure

1. Click the title to configure in the setting menu
  - The setting window for that particular title will be shown.
2. Configure each setting item
3. When you are done making changes, click **[Update]** to update the settings
  - When the settings are updated, **[Settings updated.]** will be shown at the top left corner in the window. If this fails, an error message will be shown.
  - To cancel any changes, click another title in the setting menu.
  - Do not remove power to the station while updating.
4. Repeat the steps 1 to 3 for other settings.
  - To log out of the station, click **[Log out]** in the settings menu.



### Note

- To exit the station's web setting, click **[Log out]** and do not close the browser window by clicking **[X]**. If **[Log out]** is not used, it will be unable to login for approximately 1 hour.
- If the setting window switch to another without clicking **[Update]**, the settings will not be saved.
- When no activity is detected for one hour, the connection will be automatically terminated.



### List of settings

Entry	Reference page
<b>Station Information</b>	
ID and Password	
User ID	page 31
User Password	page 31
RTSP ID	page 31
RTSP Password	page 31
Language	
Language	page 32
Time	
Time Zone	
Select time zone	page 33
Daylight Savings Time	
Enable automatic daylight savings time	page 33
Date and Time	
Set date and time	page 34
<b>Network Settings</b>	
NTP	
Enable NTP	page 35
<b>System Information</b>	
Custom Sound Registry	page 36
<b>Call Settings</b>	
Call Origination	
Call Origination advanced settings	
Call Method	page 38
Ringback Tone	page 39
Call Timeout	page 39
Ringback Tone Count [time(s)]	page 39
Standard Mode Settings	page 40
Destination by Time Delay Settings	page 40
Destination Dwell Time [sec]	page 40
Schedule Settings	page 41
Tone Settings	
Busy Tone	page 44
Error Tone (Call Failed)	page 44
Call Restart Function	page 45
Incoming Call	
Call Answer Settings	
Auto Answer	page 46

Entry	Reference page
Ringtone	
Ringtone	page 46
Ringback Tone Count [time(s)]	page 46
VoIP Phone	
VoIP Phone Call Priority	page 47
<b>Option Input / Relay Output Settings</b>	
Relay Output	
Relay Output advanced settings	
Authentication Key	page 48
Sound Settings	page 48
Option Relay Control Authentication Key	page 49
<b>Function Settings</b>	
Paging Settings	
Paging Pretone	page 50
Email	
Email Addresses	
Destination 1	page 51
Destination 2	page 51
Destination 3	page 51
Email Event Trigger	
Outgoing Normal Call	page 51
Incoming Normal Call	page 51
Outgoing Priority Call	page 51
Incoming Priority Call	page 51
Outgoing Urgent Call	page 52
Incoming Urgent Call	page 52
Door Release Activated	page 52
Call Failed	page 52
Latch Reset	page 52
Error	page 52
Station Restarted	page 52
Subject	page 52
Periodic Log Transmission	
Periodic Log Transmission	page 53
Periodic Log Transmit Time	page 53
Periodic Log Transmit Interval	page 53
Periodic Log Transmission Subject	page 53
Send Test Email	page 54
Communication Audio Messages	
Start Communication	page 55

Entry	Reference page
Code Received	
Code	page 56
Message	page 56
Chime	
Weekly Schedule	
Start Time	page 57
Chime	page 57
Daily Schedule	
Start Time	page 60
Chime	page 60
<b>Station Settings</b>	
Volume / Tone	
Volume	
Handset Transmit	page 61
Handset Receive	page 61
Hands-free Transmit	page 61
Hands-free Receive	page 61
External Output	page 61
VoIP Phone Volume Adjustment	page 61
Ringtone	page 61
Tone	
Communication Timeout Notification	page 62
Communication End Pretone	page 62
Auto Answer Tone	page 63
Key Received	page 63
Error	page 64
Communication	
Talk Timeout [sec]	page 65
Communication Start Tone	page 65
Monitor	
Monitored Notification Tone	page 66
Monitored LED Notification	page 66
Door Release for IX-RS	
Contact Assignment	page 67
Authentication Key	page 67
<b>Maintenance</b>	
Initialization	page 68

## Station Information

### ID and Password

•ID and Password

User ID\*  1-32 alphanumeric characters(\*2)  
 User Password\*  1-32 alphanumeric characters(\*2)

RTSP ID\*  1-32 alphanumeric characters(\*4)  
 RTSP Password\*  1-32 alphanumeric characters(\*4)

(\*2)User ID or Password is default.  
 (\*4)RTSP ID or Password is default.  
 For security purposes, it is recommend to modify the default ID and Password.

Entry	Description	Settings	Default values
User ID* <sup>1</sup>	Set the ID of the user account for logging in to the Web System Setting Server.	1 - 32 alphanumeric characters	user
User Password* <sup>1</sup>	Set the Password of the user account for logging in to the Web System Setting Server.	1 - 32 alphanumeric characters	user
RTSP ID* <sup>1</sup>	Set the ID to access this station from 3rd party products using RTSP.	1 - 32 alphanumeric characters	aiphone
RTSP Password * <sup>1</sup>	Set the Password to access this station from 3rd party products using RTSP.	1 - 32 alphanumeric characters	aiphone

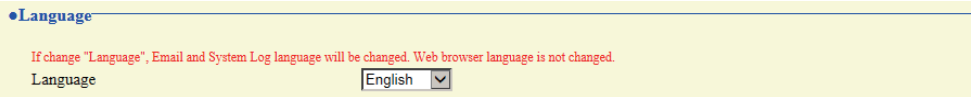
\*1 Indicates a required field. Use the default values, unless a change is necessary.



#### Note

- The RTSP port number is "554."
- The "Administrator ID" (administrator setting) and "User ID" cannot be identical.
- "User Password" and "RTSP Password " are shown on the screen as "●●●●●●."

### Language

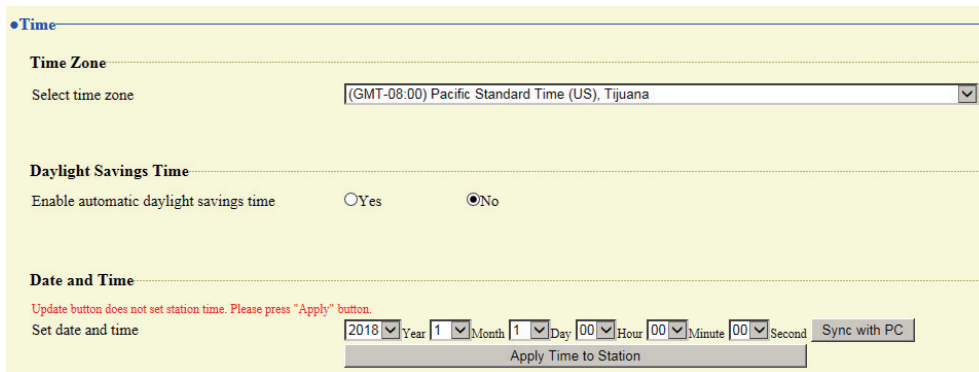


Entry	Description	Settings	Default values
Language	Select the language for email and system log language. <ul style="list-style-type: none"> <li>• Language used for various settings (including the station name)</li> <li>• Language used for email and system log</li> </ul>	<ul style="list-style-type: none"> <li>• Japanese</li> <li>• English</li> <li>• French</li> <li>• Spanish</li> <li>• Dutch</li> <li>• Traditional Chinese</li> <li>• Simplified Chinese</li> </ul>	English

#### Note

- When logging in to web configuration with the station in its default state at the first time, the language will be set to the same language that was selected when logging in.

### Time



#### ! Important

- If the power is turned off for at least 30 minutes, the time and date will revert back to the default setting. If this happens, set the time and date again.

#### ■ Time Zone

Entry	Description	Settings	Default values
Select time zone	Set the Time Zone.	Select from 99 regions	(GMT-08:00) Pacific Standard Time (US), Tijuana

#### 💡 Note

- When logging in to web configuration with the station in its default state at the first time, this will be set as follows depending on the language selected when logging in.  
 Japanese: (GMT+09:00) Osaka, Sapporo, Tokyo  
 English: (GMT-08:00) Pacific Standard Time (US), Tijuana  
 French: (GMT+01:00) Brussels, Madrid, Copenhagen, Paris  
 Spanish: (GMT+01:00) Brussels, Madrid, Copenhagen, Paris  
 Dutch: (GMT+01:00) Amsterdam, Berlin, Bern, Rome, Stockholm  
 Traditional Chinese: (GMT+08:00) Taipei  
 Simplified Chinese: (GMT+08:00) Beijing, Chongqing, Hong Kong, Urumqi

#### ■ Daylight Savings Time

Entry	Description	Settings	Default values
Enable automatic daylight savings time	The daylight saving time is set automatically according by region selected in <a href="#">"Select time zone (→page 33)"</a> .	<ul style="list-style-type: none"> <li>• Yes</li> <li>• No</li> </ul>	No

### ■ Date and Time

Clicking **[Update]** will not update the date and time settings on this station.

Press **[Apply Time to Station]** to update.

Entry	Description	Settings	Default values
Set date and time	Set the current time for the station. This is a required setting.	00:00:00/1/1/2018 - 3:59:59/ 12/31/2037 <b>[Sync with PC]:</b> Set to the current time setting of the PC.	The time from 00:00:00/1/1/2018 with the time difference set in "Select time zone" applied

## Network settings

### NTP

•NTP

Enable NTP  Yes  No Use

#### ■ Enable NTP

Entry	Description	Settings	Default values
Enable NTP	Enable NTP server to retrieve the time. Configuring NTP server is required separately if using an NTP server. Contact your system administrator.	<ul style="list-style-type: none"> <li>• Yes</li> <li>• No Use</li> </ul>	No Use


## System Information

### Custom Sound Registry

Register a maximum of 100 audio files to be used for call acknowledged tones. (total length should not exceed approximately 200 seconds.).

Supported file format

- File Type: .wav
- File name: Within 41 characters (excluding extension)
- Sample Size: 16 bits
- Sample Rate: 8 kHz and 16 kHz  
 8 kHz (when "Audio Codec" is set to "G.711 (μ-Law)" or "G.711 (A-Law)")  
 16 kHz (when "Audio Codec" is set to "G.722")  
 Contact the system administrator for information on the audio codec.
- Channel: 1(mono)

 **Note**

- If using a file for a ringback tone, ringtone, add a period of silence in the .wav file if the tone is to be intermittent.
- Sample files of custom tones are provided on our website (<https://www.aiphone.net/support/>) for download. Use the files in it as audio sources.

**•Custom Sound Registry**

Register the file with the sampling frequency of the codec (G.711: 8 kHz G.722: 16 kHz)  
 specified in "Audio Codec" under "Network Settings"

#	Name	Browse for .wav file (Less than 200 sec, cumulative)	Delete
1		Browse...	<input type="checkbox"/>
2		Browse...	<input type="checkbox"/>
3		Browse...	<input type="checkbox"/>
4		Browse...	<input type="checkbox"/>
5		Browse...	<input type="checkbox"/>
6		Browse...	<input type="checkbox"/>
7		Browse...	<input type="checkbox"/>
8		Browse...	<input type="checkbox"/>
9		Browse...	<input type="checkbox"/>
10		Browse...	<input type="checkbox"/>
11		Browse...	<input type="checkbox"/>
12		Browse...	<input type="checkbox"/>
13		Browse...	<input type="checkbox"/>
14		Browse...	<input type="checkbox"/>
15		Browse...	<input type="checkbox"/>

Sound file format:  
 File Type: .wav  
 File Name: 1-41 alphanumeric characters (without file extensions)  
 Sample Size: 16 bits  
 Sample Rate: 8 or 16 kHz  
 Channel: 1 (monaural)

### How to upload

1. Click **[Browse]** at the end of the row for the station in which the file is to be registered.



2. Select the audio file to register, and click **[Open]**.
  - Information on the selected audio file is displayed.
    - Name: The name of the registered file is shown.  
The name will be shown as the setting value when configuring ringtone etc.
    - File attachment: The audio file reference destination is shown.

3. Click **[Update]**.

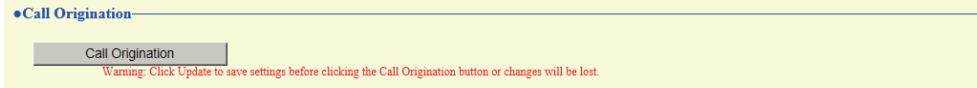
### How to delete

1. Check the **[Delete]** box of the audio file to delete.
2. Click **[Update]**.

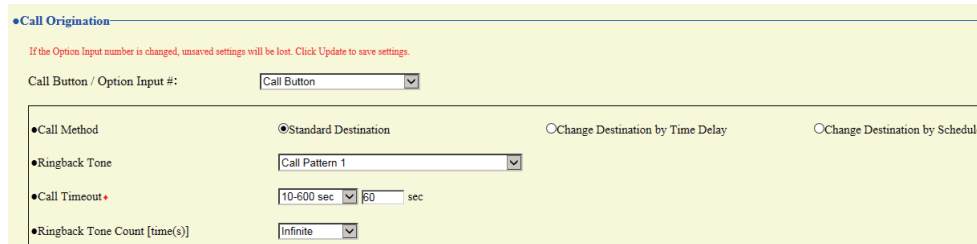
## Call Settings

### Call Origination

Click **[Call Origination]**.



Or, click "Call Origination" in the Setting menu to switch to the Call Origination screen.



### ■ Call Origination advanced settings

#### How to configure advanced Call Origination

1. Select "Call Button" or "Option Input 1" in **[Call Button / Option Input #]**.
  - Settings for the selected outgoing call method will be displayed.
2. Configure each item.
3. Click **[Update]**.

Entry	Description	Settings	Default values
Call Method	Select the Call Method to change call destinations automatically by time delay or schedule. For details on how to configure the settings, refer to <a href="#">"How to configure Standard Destination (→page 40)"</a> or later.	<ul style="list-style-type: none"> <li>• Standard Destination: Do not change call destination automatically.</li> <li>• Change Destination by Time Delay: Switches on the timer configured with <a href="#">"Destination Dwell Time [sec]*1 (→page 40)"</a>.</li> <li>• Change Destination by Schedule: Change destination group by <a href="#">"How to configure Change Destination by Schedule (→page 41)"</a>.</li> </ul>	Standard Destination

Entry	Description	Settings	Default values
Ringback Tone	Select the sound to be played by the station when placing a call.	<ul style="list-style-type: none"> <li>• None</li> <li>• Call Pattern 1</li> <li>• Call Pattern 2</li> <li>• Call Pattern 3</li> <li>• Call Pattern 4</li> <li>• Call Pattern 5</li> <li>• Call Pattern 6</li> <li>• Tremolo Sound</li> <li>• Busy Response Tone</li> <li>• On Hold</li> <li>• Operation Sound</li> <li>• Error</li> <li>• Pre Tone 1</li> <li>• Pre Tone 2</li> <li>• Pre Tone 3</li> <li>• Communication End Pretone</li> <li>• Call Queue Notification</li> <li>• Waiting Reply Tone</li> <li>• Select a sound that is registered in "<a href="#">Custom Sound Registry</a>" (<a href="#">→page 36</a>)".</li> </ul>	Call Button: Call Pattern 1 Option Input 1: Call Pattern 2 Option Input 2: Call Pattern 3 Option Input 3: Call Pattern 4 Option Input 4: Call Pattern 5 Option Input 5: Call Pattern 6 Option Input 6: Tremolo Sound
Call Timeout* <sup>1</sup>	Set the Call Timeout for outgoing call.	<ul style="list-style-type: none"> <li>• 10 - 600 sec: Select to set between 10-600 sec (by 1 sec).</li> <li>• Infinite: Keep calling until call is answered.</li> </ul>	60sec
Ringback Tone Count [time(s)]	Set the play count of ringback tone for outgoing call.	<ul style="list-style-type: none"> <li>• 1-20 times</li> <li>• Infinite: The ringback tone will continue for the amount of time configured in "Call Timeout."</li> </ul>	Infinite

\*1 Indicates a required field. Use the default values, unless a change is necessary.

### Note

- When calling a VoIP Phone, this will be the shorter time of the time set for "Call Timeout" and the call duration set on the IP-PBX.

### How to configure Standard Destination

Configure the call group number and call priority when [“Call Method \(→page 38\)”](#) is set to **[Standard Destination]**.

•Standard Mode Settings

Call Destination	Priority
01	Normal

Entry	Description	Settings	Default values
Call Destination	Select the destination group.	01 to 10	Call Button: 01 Contact input 1 call: -
Priority	Select the priority.	<ul style="list-style-type: none"> <li>• Normal</li> <li>• Priority</li> <li>• Urgent</li> </ul>	Call Button: Normal Contact input 1 call: Normal

### How to configure Change Destination by Time Delay

Configure the call group to change the destination, and the priority when [“Call Method \(→page 38\)”](#) is set to **[Change Destination by Time Delay]**.

A maximum of eight groups can be configured. Groups will be switched in order at each configured Destination Dwell Time.

•Destination by Time Delay Settings

#	Call Destination	Priority
1		Normal
2		Normal
3		Normal
4		Normal
5		Normal
6		Normal
7		Normal
8		Normal

Destination Dwell Time [sec] • 30 10-600sec / 1 sec step

Entry	Description	Settings	Default values
Call Destination	Select the destination group.	01 to 10	-
Priority	Select the priority.	<ul style="list-style-type: none"> <li>• Normal</li> <li>• Priority</li> <li>• Urgent</li> </ul>	Call Button: Normal Contact input 1 call: Normal
Destination Dwell Time [sec]*1	Select the delay time to change the call destination.	10-600 seconds (1 sec step)	30 sec

\*1 Indicates a required field. Use the default values, unless a change is necessary.

### How to configure Change Destination by Schedule

Configure this if "[Call Method \(→page 38\)](#)" is set to **[Change Destination by Schedule]**.

#### ● Weekly Schedule

Configure the transfer time, call group number, and call priority for the outgoing call destination, each day from Sunday to Saturday. 12 schedules can be set for each day.

### How to configure the Weekly Schedule

1. Configure the "Start Time," "End Time," "Call Destination," and "Priority" for each day of the week.
2. Click **[Update]**.

Entry	Description	Settings	Default values
Start Time	Set the time to start changing the call destination.	00:00 - 23:59	-
End Time	Set the time to stop changing the call destination. If this is set earlier than "Start Time," the end time will be for the following day.	00:00 - 23:59	-
Call Destination	Set the call destination to change within the schedule.	01 to 10	-
Priority	Set the priority of calls.	<ul style="list-style-type: none"> <li>• Normal</li> <li>• Priority</li> <li>• Urgent</li> </ul>	-

### How to delete the Weekly Schedule

1. Return settings to their default values, and then click **[Update]**.

### ● Daily Schedule

Configure the transfer time, call group number, and call priority for the outgoing call destination, in units of one day. A schedule one year from the set day can be configured. 12 schedules can be set for each day.

Daily Schedule  
If the display month is changed by "<<" or ">>", unsaved settings will be lost. Click Update to save settings.

Calendar

Monday, January 1, 2018

0/12 Registered Schedules

Start Time End Time GroupNumber Priority Add (\*) Press "Add" button to register.

Monday, January 1 Outgoing Call Schedule List (Daily, Weekly)

#	Type	Start Time	End Time	GroupNumber	Priority	Delete
1						
2						
3						
4						
5						
6						
7						
8						
9						
10						

Schedule List

### How to configure the Daily Schedule

1. Select the day to set a schedule from "Calendar."
2. Configure "Start Time," "End Time," "Call Destination," and "Priority," and then click **[Add]**.
3. Click **[Update]**.

Entry	Description	Settings	Default values
Start Time	Set the time to start changing the call destination.	00:00 - 23:59	-
End Time	Set the time to stop changing the call destination. If this is set earlier than "Start Time," the end time will be for the following day.	00:00 - 23:59	-
Call Destination	Set the call destination to change within the schedule.	01 to 10	-
Priority	Set the priority of calls.	<ul style="list-style-type: none"> <li>• Normal</li> <li>• Priority</li> <li>• Urgent</li> </ul>	-

## How to delete Daily Schedule

1. Select the day to delete a schedule from "Calendar."
2. Schedules for the selected day are displayed in the "Schedule List."
  - If a weekly schedule is configured for the selected day of the week, it will also be displayed.
3. Click **[Delete]** for the schedule to delete, and click **[Update]**.
  - Refer to ["How to delete the Weekly Schedule \(→page 41\)"](#) to delete a weekly schedule.

### ■ Tone Settings

**Tone Settings**

Busy Tone  (\*) Tone generated at door release destination station.

Error Tone (Call Failed)  (\*) Tone generated at door release destination station.

Entry	Description	Settings	Default values
Busy Tone	Select the sound to be played when call destination station is busy.	<ul style="list-style-type: none"> <li>• None</li> <li>• Call Pattern 1</li> <li>• Call Pattern 2</li> <li>• Call Pattern 3</li> <li>• Call Pattern 4</li> <li>• Call Pattern 5</li> <li>• Call Pattern 6</li> <li>• Tremolo Sound</li> <li>• Busy Response Tone</li> <li>• On Hold</li> <li>• Operation Sound</li> <li>• Error</li> <li>• Pre Tone 1</li> <li>• Pre Tone 2</li> <li>• Pre Tone 3</li> <li>• Communication End Pretone</li> <li>• Call Queue Notification</li> <li>• Waiting Reply Tone</li> <li>• Select a sound that is registered in "<a href="#">Custom Sound Registry</a>" (<a href="#">→page 36</a>)".</li> </ul>	Busy Response Tone
Error Tone (Call Failed)	Select the sound to be played when outgoing call has failed.	<ul style="list-style-type: none"> <li>• None</li> <li>• Call Pattern1</li> <li>• Call Pattern2</li> <li>• Call Pattern3</li> <li>• Call Pattern4</li> <li>• Call Pattern5</li> <li>• Call Pattern6</li> <li>• Tremolo Sound</li> <li>• Busy Response Tone</li> <li>• On Hold</li> <li>• Operation Sound</li> <li>• Error</li> <li>• Pre Tone1</li> <li>• Pre Tone2</li> <li>• Pre Tone3</li> <li>• Communication End Pretone</li> <li>• Call Queue Notification</li> <li>• Waiting Reply Tone</li> <li>• Select a sound that is registered in "<a href="#">Custom Sound Registry</a>" (<a href="#">→page 36</a>)".</li> </ul>	Error



## ■ Call Restart Function

Call Restart Function

Call Restart Function       Enable       Disable

Entry	Description	Settings	Default values
Call Restart Function	Select Enable / Disable for Call Restart Function. Call Restart Function: When the station is reset during an outgoing call, the outgoing call will be resumed automatically up to 2 times.	<ul style="list-style-type: none"> <li>• Enable</li> <li>• Disable</li> </ul>	Disable

### Incoming Call

**Incoming Call**

**Call Answer Settings**

Auto Answer  ON  OFF

**Ringtone**

Ringtone  (\*) Tone generated at door release destination station.

Ringback Tone Count [time(s)]

**VoIP Phone**

VoIP Phone Call Priority

#### ■ Call Answer Settings

Entry	Description	Settings	Default values
Auto Answer	Select ON / OFF to automatically answer the individual call. Auto Answer: when receiving an individual call, answer automatically. When transferring a call, and call from VoIP Phones, its must be answered manually.	<ul style="list-style-type: none"> <li>• ON: Auto Answer.</li> <li>• OFF: No Auto Answer.</li> </ul>	OFF

#### ■ Ringtone

Entry	Description	Settings	Default values
Ringtone	Select the ringtone to be played for incoming call.	<ul style="list-style-type: none"> <li>• None</li> <li>• Call Pattern 1</li> <li>• Call Pattern 2</li> <li>• Call Pattern 3</li> <li>• Call Pattern 4</li> <li>• Call Pattern 5</li> <li>• Call Pattern 6</li> <li>• Tremolo Sound</li> <li>• Busy Response Tone</li> <li>• On Hold</li> <li>• Operation Sound</li> <li>• Error</li> <li>• Pre Tone 1</li> <li>• Pre Tone 2</li> <li>• Pre Tone 3</li> <li>• Communication End Pretone</li> <li>• Call Queue Notification</li> <li>• Waiting Reply Tone</li> <li>• Select a sound that is registered in "<a href="#">Custom Sound Registry</a>" (<a href="#">→page 36</a>)".</li> </ul>	Call Pattern 3
Ringback Tone Count [time(s)]	Set the play count of ringtone for incoming call.	<ul style="list-style-type: none"> <li>• 1-20 times</li> <li>• Infinite: The ringtone continues until the call is connected or the caller stops calling.</li> </ul>	Infinite

### ■ VoIP Phone

Entry	Description	Settings	Default values
VoIP Phone Call Priority	Select the call priority from VoIP Phone.	<ul style="list-style-type: none"><li>• Normal</li><li>• Priority</li><li>• Urgent</li></ul>	Normal

# Option Input / Relay Output Settings

## Relay Output

•Relay Output

---

•Door Release Authorization  
 Authentication Key   
(\*) 1-20 digits  
 (\*) Authentication Key must match between communicating stations to enable Door Release.

•Sound Settings  
 Door Release   
(\*) Tone generated at door release destination station.

Relay Control (start)   
(\*) Tone generated at door release destination station.

Relay Control (end)   
(\*) Tone generated at door release destination station.

---

Option Relay Control Authentication Key:  1-20 digits

### ■ Relay Output advanced settings

Entry	Description	Settings	Default values
Authentication Key	Set the Authentication Key when "Door Release" is selected in "Function (administrator setting)" for releasing the door that is connected to the station. When the "Authentication Key" is confirmed, the relay output will be activated. This will also be the authentication key used to release the door using the keypad on IX-MV7-* or a VoIP Phone.	1 - 20 digits	-
Sound Settings	<ul style="list-style-type: none"> <li>• Door Release: Select the Door Release sounds to be played.</li> <li>• Relay Control (start): Select the sound to be played when Option Relay is activated.</li> <li>• Relay Control (end): Select the sound to be played when Option Relay is deactivated.</li> </ul>	<ul style="list-style-type: none"> <li>• None</li> <li>• Call Pattern 1</li> <li>• Call Pattern 2</li> <li>• Call Pattern 3</li> <li>• Call Pattern 4</li> <li>• Call Pattern 5</li> <li>• Call Pattern 6</li> <li>• Tremolo Sound</li> <li>• Busy Response Tone</li> <li>• On Hold</li> <li>• Operation Sound</li> <li>• Error</li> <li>• Pre Tone 1</li> <li>• Pre Tone 2</li> <li>• Pre Tone 3</li> <li>• Communication End Pretone</li> <li>• Call Queue Notification</li> <li>• Waiting Reply Tone</li> <li>• Select a sound that is registered in "<a href="#">Custom Sound Registry</a> (<a href="#">→page 36</a>)".</li> </ul>	Door Release: Operation Sound Relay Control (start): None Relay Control (end): None

### Important

- Configure the Authentication Key using 1 to 4 digits to release when using the IX-MV.
- Configure a different Authentication Key for each output terminal (the same key cannot be used.)
- Configure an different Authentication Key that is different from the Authentication Key configured in ["Communication Audio Messages \(→page 55\)"](#) or "Option Relay Control Authentication Key." If it is the same, both functions might operate.

### Note

- The "Authentication Key" is displayed as "●●●●" in the Settings screen.

### ■ Option Relay Control Authentication Key

Entry	Description	Settings	Default values
Option Relay Control Authentication Key	If "Option Relay Control (administrator setting)" is set to "Enable" and "Speed Dials / Favorites" - "TLS" is set to "Enable" on the requesting station, configure the key used to decrypt encrypted communication. If this matches the "Option Relay Control Key" of the station performing the operation, the Relay Output may be controlled.	1 - 20 digits	-

### Note

- Only one Option Relay Control Authentication Key can be set for each station. It will be shared with multiple Relay Output.
- The "Option Relay Control Authentication Key" is displayed as "●●●●" in the Settings screen.

## Function Settings

### Paging Settings

•Paging Settings  
 Paging Pretone

Entry	Description	Settings	Default values
Paging Pretone	Select the Paging Pretone.	<ul style="list-style-type: none"> <li>• None</li> <li>• Call Pattern1</li> <li>• Call Pattern2</li> <li>• Call Pattern3</li> <li>• Call Pattern4</li> <li>• Call Pattern5</li> <li>• Call Pattern6</li> <li>• Tremolo Sound</li> <li>• Busy Response Tone</li> <li>• On Hold</li> <li>• Operation Sound</li> <li>• Error</li> <li>• Pre Tone1</li> <li>• Pre Tone2</li> <li>• Pre Tone3</li> <li>• Communication End Pretone</li> <li>• Call Queue Notification</li> <li>• Waiting Reply Tone</li> <li>• Select a sound that is registered in "<a href="#">Custom Sound Registry</a> (<a href="#">→page 36</a>)" can also be selected.</li> </ul>	Pre Tone2

#### Important

- Configure a tone with a shorter duration than the pretone of the paging station. If the tone is too long, audio may not be received at the beginning of the page.

### Email

Configure this section when email notification of station operation is required.

#### ! Important

- If an SMTP server is not configured, email will not be sent even if email is configured. If email is not sent, contact the system administrator.

#### ■ Email Addresses

•Email

**Email Addresses**

Destination 1	<input type="text"/>	1-64 alphanumeric characters
Destination 2	<input type="text"/>	1-64 alphanumeric characters
Destination 3	<input type="text"/>	1-64 alphanumeric characters

Entry	Description	Settings	Default values
Destination 1 - Destination 3	Set the destination email address. You can define up to three addresses.	1 - 64 alphanumeric characters	-

#### ■ Email Event Trigger

Set up which event triggers will send an email message for each address.

**Email Event Trigger**

Event	Destination Address		
	(1)	(2)	(3)
Outgoing Normal Call	<input type="checkbox"/>	<input type="checkbox"/>	<input type="checkbox"/>
Incoming Normal Call	<input type="checkbox"/>	<input type="checkbox"/>	<input type="checkbox"/>
Outgoing Priority Call	<input type="checkbox"/>	<input type="checkbox"/>	<input type="checkbox"/>
Incoming Priority Call	<input type="checkbox"/>	<input type="checkbox"/>	<input type="checkbox"/>
Outgoing Urgent Call	<input type="checkbox"/>	<input type="checkbox"/>	<input type="checkbox"/>
Incoming Urgent Call	<input type="checkbox"/>	<input type="checkbox"/>	<input type="checkbox"/>
Door Release Activated	<input type="checkbox"/>	<input type="checkbox"/>	<input type="checkbox"/>
Call Failed	<input type="checkbox"/>	<input type="checkbox"/>	<input type="checkbox"/>
Latch Reset	<input type="checkbox"/>	<input type="checkbox"/>	<input type="checkbox"/>
Error	<input type="checkbox"/>	<input type="checkbox"/>	<input type="checkbox"/>
Station Restarted	<input type="checkbox"/>	<input type="checkbox"/>	<input type="checkbox"/>

Entry	Description	Settings	Default values
Outgoing Normal Call	Send email when an outgoing call is placed at "Normal" priority.	<ul style="list-style-type: none"> <li>• Checked: Send</li> <li>• Unchecked: Do not send</li> </ul>	Unchecked: Do not send
Incoming Normal Call	Send email when an incoming call is received at "Normal" priority.	<ul style="list-style-type: none"> <li>• Checked: Send</li> <li>• Unchecked: Do not send</li> </ul>	Unchecked: Do not send
Outgoing Priority Call	Send email when an outgoing call is placed at "Priority" priority.	<ul style="list-style-type: none"> <li>• Checked: Send</li> <li>• Unchecked: Do not send</li> </ul>	Unchecked: Do not send
Incoming Priority Call	Send email when an incoming call is received at "Priority" priority.	<ul style="list-style-type: none"> <li>• Checked: Send</li> <li>• Unchecked: Do not send</li> </ul>	Unchecked: Do not send

Entry	Description	Settings	Default values
Outgoing Urgent Call	Send email when an outgoing call is placed at "Urgent" priority.	<ul style="list-style-type: none"> <li>• Checked: Send</li> <li>• Unchecked: Do not send</li> </ul>	Unchecked: Do not send
Incoming Urgent Call	Send email when an incoming call is received at "Urgent" priority.	<ul style="list-style-type: none"> <li>• Checked: Send</li> <li>• Unchecked: Do not send</li> </ul>	Unchecked: Do not send
Door Release Activated	Send email when Door Release is activated.	<ul style="list-style-type: none"> <li>• Checked: Send</li> <li>• Unchecked: Do not send</li> </ul>	Unchecked: Do not send
Call Failed	Send email when outgoing call has failed.	<ul style="list-style-type: none"> <li>• Checked: Send</li> <li>• Unchecked: Do not send</li> </ul>	Unchecked: Do not send
Latch Reset	Send email when reset latch relay output. ("Latch Output" is selected in "Relay Output" - "Function (administrator setting)".)	<ul style="list-style-type: none"> <li>• Checked: Send</li> <li>• Unchecked: Do not send</li> </ul>	Unchecked: Do not send
Error	Send email when a communication error has occurred.	<ul style="list-style-type: none"> <li>• Checked: Send</li> <li>• Unchecked: Do not send</li> </ul>	Unchecked: Do not send
Station Restarted	Send email when the station has reset.	<ul style="list-style-type: none"> <li>• Checked: Send</li> <li>• Unchecked: Do not send</li> </ul>	Unchecked: Do not send

[UTF-8] used for "Subject" encoding, the subject may be incorrectly decoded depending on mail server.

Event	Subject
	1-64 alphanumeric characters
Outgoing Normal Call	
Incoming Normal Call	
Outgoing Priority Call	
Incoming Priority Call	
Outgoing Urgent Call	
Incoming Urgent Call	
Door Release Activated	
Call Failed	
Latch Reset	
Error	
Station Restarted	

Entry	Description	Settings	Default values
Subject	Set the Subject of email per Event Trigger.	1 - 64 alphanumeric characters	-



### Important

- "UTF-8" encoding is used for "Subject." Depending on the email client, the characters may appear incorrectly. To avoid this, set the encoding method to "UTF-8."



### ■ Periodic Log Transmission

Periodic Log Transmission

Settings	Destination Address		
	(1)	(2)	(3)
Periodic Log Transmission	Disable	Disable	Disable
Periodic Log Transmit Time	00 Hour 00 Minute	00 Hour 00 Minute	00 Hour 00 Minute
Periodic Log Transmit Interval	1 day	1 day	1 day
Periodic Log Transmission Subject			

Entry	Description	Settings	Default values
Periodic Log Transmission	Select Enable / Disable for send station log periodically.	<ul style="list-style-type: none"> <li>• Enable</li> <li>• Disable</li> </ul>	Disable
Periodic Log Transmit Time	Set the time to send the periodic log.	00:00 - 23:59	00:00
Periodic Log Transmit Interval	Select the interval to send the periodic log.	Every 1-7 days	1 day
Periodic Log Transmission Subject	Set the email subject for Periodic Log Transmission.	1 - 64 alphanumeric characters	-

#### Important

- "UTF-8" encoding is used for "Periodic Log Transmission Subject." Depending on the email client, the characters may appear incorrectly. To avoid this, set the encoding method to "UTF-8."

### ■ Send Test Email

Send a test email to the address specified in ["Email Addresses \(→page 51\)"](#).

Send Test Email

Send

### How to send a test email

1. Click **[Send]**.
2. The following email message will be sent to the configured address.

Example of sending an email message:

When sending a test email from the station (Station Number: 003, Station Name: Handset Sub Station 3, Location: 2F West).

Source	△△△△@△△△△△.com
Date and time	11/20/2018 7:22
To CC	xxxx@xxxxx.com
Subject	003 Handset Sub Station 3 Email Test
Description	Test Email sent at "20181120 07:21:40."  Station Number: [003] Station Name: [Handset sub station 3] Station Location: [2F West]

### ! Important

- "UTF-8" encoding is used for "Subject." Depending on the email client, the characters may appear incorrectly. To avoid this, set the encoding method to "UTF-8."

### Communication Audio Messages

Configure the Communication Audio Messages.

Communication Audio Messages: This function sends messages to destination station when beginning communication or by keypad input from the other station(IX-MV7-\* or VoIP Phone).

•Communication Audio Messages

Start Communication

Code Received

#	Code (* 1-20 digits)	Message
1	<input type="text"/>	<input type="text" value="None"/>
2	<input type="text"/>	<input type="text" value="None"/>
3	<input type="text"/>	<input type="text" value="None"/>
4	<input type="text"/>	<input type="text" value="None"/>

#### ■ Start Communication

Entry	Description	Settings	Default values
Start Communication	Select the message to be sent to destination station when beginning communication.	<ul style="list-style-type: none"> <li>• None</li> <li>• Call Pattern 1</li> <li>• Call Pattern 2</li> <li>• Call Pattern 3</li> <li>• Call Pattern 4</li> <li>• Call Pattern 5</li> <li>• Call Pattern 6</li> <li>• Tremolo Sound</li> <li>• Busy Response Tone</li> <li>• On Hold</li> <li>• Operation Sound</li> <li>• Error</li> <li>• Pre Tone 1</li> <li>• Pre Tone 2</li> <li>• Pre Tone 3</li> <li>• Communication End Pretone</li> <li>• Call Queue Notification</li> <li>• Waiting Reply Tone</li> <li>• Select a sound that is registered in "<a href="#">Custom Sound Registry</a>" (<a href="#">→page 36</a>)".</li> </ul>	None

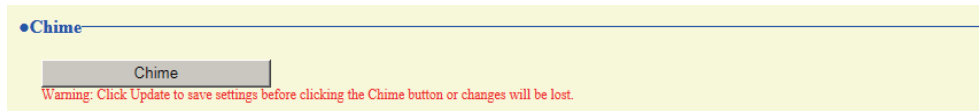
### ■ Code Received

Configure the message to be sent when the code is received. Four patterns can be set for the received code and message.

Entry	Description	Settings	Default values
Code	Set the code to play message by keypad input from IX-MV7-* or a VoIP Phone.	1 - 20 digits	-
Message	Set the code to play message by keypad input from IX-MV7-* or a VoIP Phone.	<ul style="list-style-type: none"> <li>• None</li> <li>• Call Pattern1</li> <li>• Call Pattern2</li> <li>• Call Pattern3</li> <li>• Call Pattern4</li> <li>• Call Pattern5</li> <li>• Call Pattern6</li> <li>• Tremolo Sound</li> <li>• Busy Response Tone</li> <li>• On Hold</li> <li>• Operation Sound</li> <li>• Error</li> <li>• Pre Tone1</li> <li>• Pre Tone2</li> <li>• Pre Tone3</li> <li>• Communication End Pretone</li> <li>• Call Queue Notification</li> <li>• Waiting Reply Tone</li> <li>• Select a sound that is registered in "<a href="#">Custom Sound Registry</a>" (<a href="#">→page 36</a>).</li> </ul>	None

### Chime

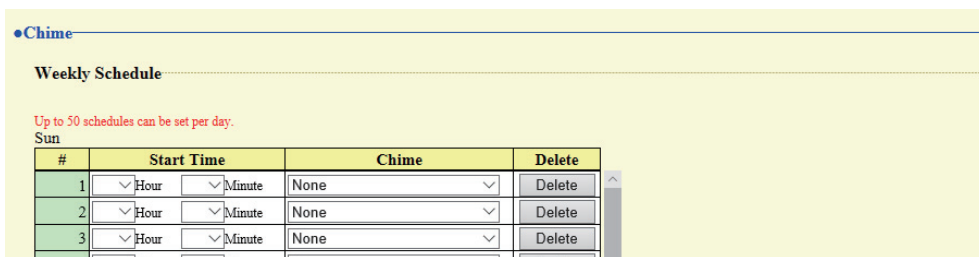
Configure the chime tone to be played from this station linked with the set schedule.  
Click **[Chime]**.



Or, click "Chime" in the Setting menu to display the Chime screen.

### ■ Weekly Schedule

Configure the start time and chime tone to play for each day of the week, from Sunday to Saturday.  
50 schedules can be set for each day.



### How to configure the Weekly Schedule

1. Configure "Start Time" and "Chime" for each day of the week.

**2.** Click **[Update]**.

Entry	Description	Settings	Default values
Start Time	Set the Time to ring Chime.	00:00 - 23:59	-
Chime	Set the sound for chime.	<ul style="list-style-type: none"> <li>• None</li> <li>• Call Pattern1</li> <li>• Call Pattern2</li> <li>• Call Pattern3</li> <li>• Call Pattern4</li> <li>• Call Pattern5</li> <li>• Call Pattern6</li> <li>• Tremolo Sound</li> <li>• Busy Response Tone</li> <li>• On Hold</li> <li>• Operation Sound</li> <li>• Error</li> <li>• Pre Tone1</li> <li>• Pre Tone2</li> <li>• Pre Tone3</li> <li>• Communication End Pretone</li> <li>• Call Queue Notification</li> <li>• Waiting Reply Tone</li> <li>• Select a sound that is registered in "<a href="#">Custom Sound Registry</a> (<a href="#">→page 36</a>)" can also be selected.</li> </ul>	None

### How to delete the Weekly Schedule

**1.** Click **[Delete]** on the row of the schedule to delete.

**2.** Click **[Update]**.

### ■ Daily Schedule

Configure the chime tone start time and the chime tone in units of one day.

A schedule one year from the set day can be configured. 50 schedules can be set for each day.

**Daily Schedule**

If the display month is changed by "<<" or ">>", unsaved settings will be lost. Click Update to save settings.

<< January, 2018 >> Calendar

Sun	Mon	Tue	Wed	Thu	Fri	Sat
	1	2	3	4	5	6
7	8	9	10	11	12	13
14	15	16	17	18	19	20
21	22	23	24	25	26	27
28	29	30	31			

Wednesday, January 3, 2018

0/50 Registered Schedules

Start Time		Chime	
<input type="text" value="Hour"/>	<input type="text" value="Minute"/>	None	<input type="button" value="Add"/> <span style="color: red;">(*) Press "Add" button to register.</span>

Wednesday, January 3 Chime Schedule List (Daily, Weekly)

#	Type	Start Time	Chime	Delete
1				<input type="button" value="Delete"/>
2				<input type="button" value="Delete"/>

Set schedule list

## How to configure the Daily Schedule

1. Select a day from "Calendar."
2. Configure "Start Time" and "Chime," and click **[Add]**.
3. Click **[Update]**.

Entry	Description	Settings	Default values
Start Time	Set the Time to ring Chime.	00:00 - 23:59	-
Chime	Set the sound for chime.	<ul style="list-style-type: none"> <li>• None</li> <li>• Call Pattern 1</li> <li>• Call Pattern 2</li> <li>• Call Pattern 3</li> <li>• Call Pattern 4</li> <li>• Call Pattern 5</li> <li>• Call Pattern 6</li> <li>• Tremolo Sound</li> <li>• Busy Response Tone</li> <li>• On Hold</li> <li>• Operation Sound</li> <li>• Error</li> <li>• Pre Tone 1</li> <li>• Pre Tone 2</li> <li>• Pre Tone 3</li> <li>• Communication End Pretone</li> <li>• Call Queue Notification</li> <li>• Waiting Reply Tone</li> <li>• Select a sound that is registered in "<a href="#">Custom Sound Registry</a> (<a href="#">→page 36</a>)".</li> </ul>	None

## How to delete Daily Schedule

1. Select the day for which to delete a schedule from "Calendar."
2. Schedules for the selected day are displayed in the "Set schedule list."
  - If a weekly schedule is configured for the selected day of the week, it will also be shown.
3. Click **[Delete]** for the schedule to delete, and click **[Update]**.
  - Refer to "[How to delete the Weekly Schedule \(→page 58\)](#)" to delete a weekly schedule.



## Station Settings

### Volume / Tone

•Volume / Tone

**Volume**

Handset Transmit

Handset Receive

Hands-free Transmit

Hands-free Receive

External Output

VoIP Phone Volume Adjustment

Ringtone

**Tone**

Communication Timeout Notification

Communication End Pretone

Auto Answer Tone

Key Received

Error

### ■ Volume

Entry	Description	Settings	Default values
Handset Transmit	Set the transmit volume using handset while communicating.	1 - 10	10
Handset Receive	Set the receive volume using handset while communicating. Also sets ringback tone volume.	1 - 10	6
Hands-free Transmit	Set the hands-free transmit volume while communicating and being monitored.	1 - 10	10
Hands-free Receive	Set the hands-free receive volume while communicating and paging. Also sets ringback tone volume.	1 - 10	10
External Output	Set the transmit volume using external output.	1 - 10	6
VoIP Phone Volume Adjustment	Select the volume adjustment between VoIP Phones and IX stations.	<ul style="list-style-type: none"> <li>• -12dB from VoIP, +12dB to VoIP</li> <li>• -6dB from VoIP, +6dB to VoIP</li> <li>• No Adjustment</li> <li>• +6dB from VoIP, -6dB to VoIP</li> <li>• +12dB from VoIP, -12dB to VoIP</li> </ul>	No Adjustment
Ringtone	Select the volume for Ringtone and Paging Pretone.	0: Mute, 1 - 10	6

### ■ Tone

Entry	Description	Settings	Default values
Communication Timeout Notification	Select the tone to be played when an outgoing call times out.	<ul style="list-style-type: none"> <li>• None</li> <li>• Call Pattern 1</li> <li>• Call Pattern 2</li> <li>• Call Pattern 3</li> <li>• Call Pattern 4</li> <li>• Call Pattern 5</li> <li>• Call Pattern 6</li> <li>• Tremolo Sound</li> <li>• Busy Response Tone</li> <li>• On Hold</li> <li>• Operation Sound</li> <li>• Error</li> <li>• Pre Tone 1</li> <li>• Pre Tone 2</li> <li>• Pre Tone 3</li> <li>• Communication End Pretone</li> <li>• Call Queue Notification</li> <li>• Waiting Reply Tone</li> <li>• Select a sound that is registered in "<a href="#">Custom Sound Registry</a>" (<a href="#">→page 36</a>)".</li> </ul>	Error
Communication End Pretone	Select the tone to be played 10 sec before communication, paging or monitoring ends.	<ul style="list-style-type: none"> <li>• None</li> <li>• Call Pattern 1</li> <li>• Call Pattern 2</li> <li>• Call Pattern 3</li> <li>• Call Pattern 4</li> <li>• Call Pattern 5</li> <li>• Call Pattern 6</li> <li>• Tremolo Sound</li> <li>• Busy Response Tone</li> <li>• On Hold</li> <li>• Operation Sound</li> <li>• Error</li> <li>• Pre Tone 1</li> <li>• Pre Tone 2</li> <li>• Pre Tone 3</li> <li>• Communication End Pretone</li> <li>• Call Queue Notification</li> <li>• Waiting Reply Tone</li> <li>• Select a sound that is registered in "<a href="#">Custom Sound Registry</a>" (<a href="#">→page 36</a>)".</li> </ul>	Communication End Pretone

Entry	Description	Settings	Default values
Auto Answer Tone	Ringtone when receiving an individual call. <a href="#">"Auto Answer (→page 46)"</a> set to "ON."	<ul style="list-style-type: none"> <li>• None</li> <li>• Call Pattern1</li> <li>• Call Pattern2</li> <li>• Call Pattern3</li> <li>• Call Pattern4</li> <li>• Call Pattern5</li> <li>• Call Pattern6</li> <li>• Tremolo Sound</li> <li>• Busy Response Tone</li> <li>• On Hold</li> <li>• Operation Sound</li> <li>• Error</li> <li>• Pre Tone1</li> <li>• Pre Tone2</li> <li>• Pre Tone3</li> <li>• Communication End Pretone</li> <li>• Call Queue Notification</li> <li>• Waiting Reply Tone</li> <li>• Select a sound that is registered in <a href="#">"Custom Sound Registry (→page 36)"</a>.</li> </ul>	Pre Tone1
Key Received	Configure the tone to send to the destination station when the door release key entered using a keypad on the destination station (station performing a door release operation) matches the authentication key of this station (station connected to the electrical lock). The tone will be heard on the other station.	<ul style="list-style-type: none"> <li>• None</li> <li>• Call Pattern1</li> <li>• Call Pattern2</li> <li>• Call Pattern3</li> <li>• Call Pattern4</li> <li>• Call Pattern5</li> <li>• Call Pattern6</li> <li>• Tremolo Sound</li> <li>• Busy Response Tone</li> <li>• On Hold</li> <li>• Operation Sound</li> <li>• Error</li> <li>• Pre Tone1</li> <li>• Pre Tone2</li> <li>• Pre Tone3</li> <li>• Communication End Pretone</li> <li>• Call Queue Notification</li> <li>• Waiting Reply Tone</li> <li>• Select a sound that is registered in <a href="#">"Custom Sound Registry (→page 36)"</a>.</li> </ul>	None

Entry	Description	Settings	Default values
Error	Select the tone to be played when error has occurred.	<ul style="list-style-type: none"> <li>• None</li> <li>• Call Pattern1</li> <li>• Call Pattern2</li> <li>• Call Pattern3</li> <li>• Call Pattern4</li> <li>• Call Pattern5</li> <li>• Call Pattern6</li> <li>• Tremolo Sound</li> <li>• Busy Response Tone</li> <li>• On Hold</li> <li>• Operation Sound</li> <li>• Error</li> <li>• Pre Tone1</li> <li>• Pre Tone2</li> <li>• Pre Tone3</li> <li>• Communication End Pretone</li> <li>• Call Queue Notification</li> <li>• Waiting Reply Tone</li> <li>• Select a sound that is registered in "<a href="#">Custom Sound Registry</a>" (<a href="#">→page 36</a>)".</li> </ul>	Error

### Communication

**• Communication**  
 Talk Timeout [sec] ♦   sec Infinite or 30-600 sec / 1 sec step  
 Communication Start Tone

Entry	Description	Settings	Default values
Talk Timeout [sec] <sup>*1</sup>	Set the communication timer when placing a call. Communication timer when receiving a call is set at the destination station.	<ul style="list-style-type: none"> <li>• 30-600 sec: Choose this to set a time between 30 and 600 sec (by 1 sec).</li> <li>• Infinite: No timeout.</li> </ul>	60sec
Communication Start Tone	Select the tone to be played when communication starts.	<ul style="list-style-type: none"> <li>• None</li> <li>• Call Pattern1</li> <li>• Call Pattern2</li> <li>• Call Pattern3</li> <li>• Call Pattern4</li> <li>• Call Pattern5</li> <li>• Call Pattern6</li> <li>• Tremolo Sound</li> <li>• Busy Response Tone</li> <li>• On Hold</li> <li>• Operation Sound</li> <li>• Error</li> <li>• Pre Tone1</li> <li>• Pre Tone2</li> <li>• Pre Tone3</li> <li>• Communication End Pretone</li> <li>• Call Queue Notification</li> <li>• Waiting Reply Tone</li> <li>• Select a sound that is registered in "<a href="#">Custom Sound Registry</a>" (<a href="#">→page 36</a>).</li> </ul>	None

\*1 Indicates a required field. Use the default values, unless a change is necessary.

#### Important

- When on a call with a VoIP Phone, this will be the call duration configured on the VoIP Phone.

### Monitor

• Monitor

Monitored Notification Tone

Monitored LED Notification  ON  OFF

Entry	Description	Settings	Default values
Monitored Notification Tone	Select the tone to be played when monitored by another station.	<ul style="list-style-type: none"> <li>• None</li> <li>• Call Pattern1</li> <li>• Call Pattern2</li> <li>• Call Pattern3</li> <li>• Call Pattern4</li> <li>• Call Pattern5</li> <li>• Call Pattern6</li> <li>• Tremolo Sound</li> <li>• Busy Response Tone</li> <li>• On Hold</li> <li>• Operation Sound</li> <li>• Error</li> <li>• Pre Tone1</li> <li>• Pre Tone2</li> <li>• Pre Tone3</li> <li>• Communication End Pretone</li> <li>• Call Queue Notification</li> <li>• Waiting Reply Tone</li> <li>• Select a sound that is registered in "<a href="#">Custom Sound Registry</a>" (<a href="#">→page 36</a>)".</li> </ul>	None
Monitored LED Notification	Select ON / OFF for status LED notification (Blue flashing) while being monitored by another station.	<ul style="list-style-type: none"> <li>• ON</li> <li>• OFF</li> </ul>	OFF

### Door Release for IX-RS

•Door Release for IX-RS


Group Number:

#	Station Information	Contact Assignment	Authentication Key
1		Destination Station	
2		Destination Station	
3		Destination Station	
4		Destination Station	
5		Destination Station	
6		Destination Station	
7		Destination Station	
8		Destination Station	
9		Destination Station	
10		Destination Station	
11		Destination Station	
12		Destination Station	

#### How to configure Door Release for IX-RS

1. Select the group to configure from **[Group Number]**.
  - Settings for the selected group number are displayed.
2. Configure each item.
3. When done, click **[Update]**.

Entry	Description	Settings	Default values
Contact Assignment	Select which relay output will be used for door release during call.	<ul style="list-style-type: none"> <li>• Origination Station: Use origination station relay output for door release.</li> <li>• Destination Station: Use destination station relay output for door release.</li> </ul>	Destination Station
Authentication Key	When "Destination Station" is selected in <a href="#">"Contact Assignment (→page 67)"</a> set the Authentication Key for door release. Authentication key must match with the destination station's authentication key.	1 - 20 digits	-

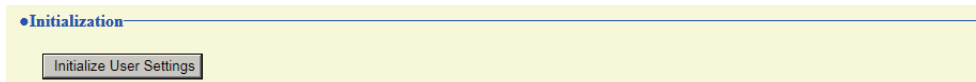
 **Note**

- "Authentication Key" is shown as "●●●●" on the screen.
- Configure the door release key using 1 to 4 digits, when releasing an electrical lock connected to IX-MV.

## Maintenance

### Initialization

Initialization resets all settings back to default.



### How to initialize

1. Click **[Initialize User Settings]**.
2. Click **[OK]**.
  - Click **[Cancel]** to cancel the initialization.

### ! Important

- If the initialization process fails, a message (**[Error: Station initialization failed.]**) will be displayed. Re-initialize if this happens.



# Specifications

Power	PoE (IEEE802.3af Class 0 standard)
Current Consumption	Standby: 38 mA; Maximum: 95 mA
Communication	Hands-free (concurrent two-way communication type telephone between handsets only)
LAN	Ethernet (10BASE-T, 100BASE-TX), Auto MDI/MDI-X-compatible
Audio codec	G.711 ( $\mu$ -law and A-law) and G.722
Protocol	IPv4, IPv6, TCP, UDP, SIP, HTTP, HTTPS, RTSP, RTP, RTCP, IGMP, MLD, SMTP, SFTP, DHCP, NTP, DNS
Encryption system	TLS1.0, TLS1.1, TLS1.2
Packet transmission system	Unicast
Number of called stations	20 stations $\times$ 10 groups
Operating temperature	0 - 40°C (32 - 104°F)
Materials	Fire-retardant resin
Color	IX-RS-W: white, IX-RS-B: black
Dimensions	90 mm (3-9/16") (W) $\times$ 192 mm (7-9/16") (H) $\times$ 67 mm (2-5/8") (D)
Weight:	520 g (approx.) (1.15 lbs)

## Maintenance

- Clean the station gently with a soft, dry cloth. For difficult stains, dip a soft cloth in neutral detergent diluted with water, wring it out well, and then clean unit.

### Important

- Do not use chemicals such as benzene or paint thinner. You may damage the surface of the station, or cause discoloration.

# Notice regarding the software

Use of the software installed on this product has received direct or indirect authorization from third parties.

(1) Apache License 2.0

This software includes Google Protocol Buffers.

You may obtain a copy of the License at "<http://www.apache.org/licenses/LICENSE-2.0>".

Please be noted that a portion of this software is made by changing or modifying original source files.

(2) bzip2 and libbzip2 License

This file is a part of bzip2 and/or libbzip2, a program and library for lossless, block-sorting data compression.

Copyright (C) 1996-2002 Julian R Seward. All rights reserved.

Redistribution and use in source and binary forms, with or without modification, are permitted provided that the following conditions are met:

1. Redistributions of source code must retain the above copyright notice, this list of conditions and the following disclaimer.
2. The origin of this software must not be misrepresented; you must not claim that you wrote the original software. If you use this software in a product, an acknowledgment in the product documentation would be appreciated but is not required.
3. Altered source versions must be plainly marked as such, and must not be misrepresented as being the original software.
4. The name of the author may not be used to endorse or promote products derived from this software without specific prior written permission.

THIS SOFTWARE IS PROVIDED BY THE AUTHOR "AS IS" AND ANY EXPRESS OR IMPLIED WARRANTIES, INCLUDING, BUT NOT LIMITED TO, THE IMPLIED WARRANTIES OF MERCHANTABILITY AND FITNESS FOR A PARTICULAR PURPOSE ARE DISCLAIMED.

IN NO EVENT SHALL THE AUTHOR BE LIABLE FOR ANY DIRECT, INDIRECT, INCIDENTAL, SPECIAL, EXEMPLARY, OR CONSEQUENTIAL DAMAGES (INCLUDING, BUT NOT LIMITED TO, PROCUREMENT OF SUBSTITUTE GOODS OR SERVICES; LOSS OF USE, DATA, OR PROFITS; OR BUSINESS INTERRUPTION) HOWEVER CAUSED AND ON ANY THEORY OF LIABILITY, WHETHER IN CONTRACT, STRICT LIABILITY, OR TORT (INCLUDING NEGLIGENCE OR OTHERWISE) ARISING IN ANY WAY OUT OF THE USE OF THIS SOFTWARE, EVEN IF ADVISED OF THE POSSIBILITY OF SUCH DAMAGE.

(3) GPL/LGPL

This product includes software components subject to the GPL/LGPL.

Details can be found at the following links.

<http://www.gnu.org/licenses/gpl.html>

<http://www.gnu.org/licenses/lgpl.html>

Customers can obtain, modify, and re-distribute the source code of the software components according to the GPL/LGPL.

Please see the website below for how to obtain sequence GPL/LGPL of this source code.

<http://www.aiphone.co.jp/data/software/source/gpl/download/ix/>

\* Be sure to read the following before downloading.

<<Please confirm>>

- According to GPL/LGPL, the source code of the software components is not guaranteed, including warranty on "merchantability" or "suitability for a particular purpose."
- The source code of the software components is provided "as is" and based on the GPL/LGPL.
- Please note that we cannot answer questions regarding the content of the source code of the software components.

(4) ISC License

Copyright (c) 2004-2011 by Internet Systems Consortium, Inc. ("ISC")

Copyright (c) 1995-2003 by Internet Software Consortium Permission to use, copy, modify, and/or distribute this software for any purpose with or without fee is hereby granted, provided that the above copyright notice and this permission notice appear in all copies.

THE SOFTWARE IS PROVIDED "AS IS" AND ISC DISCLAIMS ALL WARRANTIES WITH REGARD TO THIS SOFTWARE INCLUDING ALL IMPLIED WARRANTIES OF MERCHANTABILITY AND FITNESS.

IN NO EVENT SHALL ISC BE LIABLE FOR ANY SPECIAL, DIRECT, INDIRECT, OR CONSEQUENTIAL DAMAGES OR ANY DAMAGES WHATSOEVER RESULTING FROM LOSS OF USE, DATA OR PROFITS, WHETHER IN AN ACTION OF CONTRACT, NEGLIGENCE OR OTHER TORTIOUS ACTION, ARISING OUT OF OR IN CONNECTION WITH THE USE OR PERFORMANCE OF THIS SOFTWARE.

(5) MIT License

Copyright (c) 2018 Aiphone co.,Ltd.

Released under the MIT license.

Permission is hereby granted, free of charge, to any person obtaining a copy of this software and associated documentation files (the "Software"), to deal in the Software without restriction, including without limitation the rights to use, copy, modify, merge, publish, distribute, sublicense, and/or sell copies of the Software, and to permit persons to whom the Software is furnished to do so, subject to the following conditions:

The above copyright notice and this permission notice shall be included in all copies or substantial portions of the Software.

THE SOFTWARE IS PROVIDED "AS IS", WITHOUT WARRANTY OF ANY KIND, EXPRESS OR IMPLIED, INCLUDING BUT NOT LIMITED TO THE WARRANTIES OF MERCHANTABILITY, FITNESS FOR A PARTICULAR PURPOSE AND NONINFRINGEMENT.

IN NO EVENT SHALL THE AUTHORS OR COPYRIGHT HOLDERS BE LIABLE FOR ANY CLAIM, DAMAGES OR OTHER LIABILITY, WHETHER IN AN ACTION OF CONTRACT, TORT OR OTHERWISE, ARISING FROM, OUT OF OR IN CONNECTION WITH THE SOFTWARE OR THE USE OR OTHER DEALINGS IN THE SOFTWARE.

(6) NTP License

Copyright (c) University of Delaware 1992-2011

Permission to use, copy, modify, and distribute this software and its documentation for any purpose with or without fee is hereby granted, provided that the above copyright notice appears in all copies and that both the copyright notice and this permission notice appear in supporting documentation, and that the name University of Delaware not be used in advertising or publicity pertaining to distribution of the software without specific, written prior permission.

The University of Delaware makes no representations about the suitability this software for any purpose.

It is provided "as is" without express or implied warranty.

(7) OpenSSL License

Copyright (c) 1998-2011 The OpenSSL Project. All rights reserved.

Redistribution and use in source and binary forms, with or without modification, are permitted provided that the following conditions are met:

- (a) Redistributions of source code must retain the above copyright notice, this list of conditions and the following disclaimer.
- (b) Redistributions in binary form must reproduce the above copyright notice, this list of conditions and the following disclaimer in the documentation and/or other materials provided with the distribution.
- (c) All advertising materials mentioning features or use of this software must display the following acknowledgment:  
"This product includes software developed by the OpenSSL Project for use in the OpenSSL Toolkit. (<http://www.openssl.org/>)"
- (d) The names "OpenSSL Toolkit" and "OpenSSL Project" must not be used to endorse or promote products derived from this software without prior written permission. For written permission, please contact [openssl-core@openssl.org](mailto:openssl-core@openssl.org).
- (e) Products derived from this software may not be called "OpenSSL" nor may "OpenSSL" appear in their names without prior written permission of the OpenSSL Project.
- (f) Redistributions of any form whatsoever must retain the following acknowledgment:  
"This product includes software developed by the OpenSSL Project for use in the OpenSSL Toolkit (<http://www.openssl.org/>)"

THIS SOFTWARE IS PROVIDED BY THE OpenSSL PROJECT "AS IS" AND ANY EXPRESSED OR IMPLIED WARRANTIES, INCLUDING, BUT NOT LIMITED TO, THE IMPLIED WARRANTIES OF MERCHANTABILITY AND FITNESS FOR A PARTICULAR PURPOSE ARE DISCLAIMED.

IN NO EVENT SHALL THE OpenSSL PROJECT OR ITS CONTRIBUTORS BE LIABLE FOR ANY DIRECT, INDIRECT, INCIDENTAL, SPECIAL, EXEMPLARY, OR CONSEQUENTIAL DAMAGES (INCLUDING, BUT NOT LIMITED TO, PROCUREMENT OF SUBSTITUTE GOODS OR SERVICES; LOSS OF USE, DATA, OR PROFITS; OR BUSINESS INTERRUPTION) HOWEVER CAUSED AND ON ANY THEORY OF LIABILITY, WHETHER IN CONTRACT, STRICT LIABILITY, OR TORT (INCLUDING NEGLIGENCE OR OTHERWISE) ARISING IN ANY WAY OUT OF THE USE OF THIS SOFTWARE, EVEN IF ADVISED OF THE POSSIBILITY OF SUCH DAMAGE.

(8) Original SSLeay License

Redistribution and use in source and binary forms, with or without modification, are permitted provided that the following conditions are met:

- (a) Redistributions of source code must retain the copyright notice, this list of conditions and the following disclaimer.
- (b) Redistributions in binary form must reproduce the above copyright notice, this list of conditions and the following disclaimer in the documentation and/or other materials provided with the distribution.
- (c) All advertising materials mentioning features or use of this software must display the following acknowledgment:  
"This product includes cryptographic software written by Eric Young (eay@cryptsoft.com)" The word 'cryptographic' can be left out if the routines from the library being used are not cryptographic related :-).
- (d) If you include any Windows specific code (or a derivative thereof) from the apps directory (application code) you must include an acknowledgment:  
"This product includes software written by Tim Hudson (tjh@cryptsoft.com)"

THIS SOFTWARE IS PROVIDED BY ERIC YOUNG "AS IS" AND ANY EXPRESS OR IMPLIED WARRANTIES, INCLUDING, BUT NOT LIMITED TO, THE IMPLIED WARRANTIES OF MERCHANTABILITY AND FITNESS FOR A PARTICULAR PURPOSE ARE DISCLAIMED. IN NO EVENT SHALL THE AUTHOR OR CONTRIBUTORS BE LIABLE FOR ANY DIRECT, INDIRECT, INCIDENTAL, SPECIAL, EXEMPLARY, OR CONSEQUENTIAL DAMAGES (INCLUDING, BUT NOT LIMITED TO, PROCUREMENT OF SUBSTITUTE GOODS OR SERVICES; LOSS OF USE, DATA, OR PROFITS; OR BUSINESS INTERRUPTION) HOWEVER CAUSED AND ON ANY THEORY OF LIABILITY, WHETHER IN CONTRACT, STRICT LIABILITY, OR TORT (INCLUDING NEGLIGENCE OR OTHERWISE) ARISING IN ANY WAY OUT OF THE USE OF THIS SOFTWARE, EVEN IF ADVISED OF THE POSSIBILITY OF SUCH DAMAGE.

(9) RSA Message-Digest License

Copyright (C) 1990, RSA Data Security, Inc. All rights reserved.

License to copy and use this software is granted provided that it is identified as the "RSA Data Security, Inc. MD5 Message-Digest Algorithm" in all material mentioning or referencing this software or this function.

License is also granted to make and use derivative works provided that such works are identified as "derived from the RSA Data Security, Inc. MD5 Message-Digest Algorithm" in all material mentioning or referencing the derived work.

RSA Data Security, Inc. makes no representations concerning either the merchantability of this software or the suitability of this software for any particular purpose.

It is provided "as is" without express or implied warranty of any kind.

These notices must be retained in any copies of any part of this documentation and/or software.

Please be noted that this software is derived from the RSA Data Security, Inc. MD5 Message-Digest Algorithm.

(10) zlib License

(C) 1995-2010 Jean-loup Gailly and Mark Adler

See the following website for source code including changes for software that has been authorized under the above licenses.

<http://www.aiphone.co.jp/data/software/source/gpl/download/ix/>

\* Be sure to read the following before downloading.

<<Please confirm>>

– Please note that we cannot answer questions regarding the content of the source code of the software components.

# REGULATIONS

## FCC

This device complies with part 15 of the FCC Rules. Operation is subject to the following two conditions: (1) This device may not cause harmful interference, and (2) this device must accept any interference received, including interference that may cause undesired operation.


NOTE: This equipment has been tested and found to comply with the limits for a Class B digital device, pursuant to part 15 of the FCC Rules. These limits are designed to provide reasonable protection against harmful interference in a residential installation.

This equipment generates, uses and can radiate radio frequency energy and, if not installed and used in accordance with the instructions, may cause harmful interference to radio communications. However, there is no guarantee that interference will not occur in a particular installation. If this equipment does cause harmful interference to radio or television reception, which can be determined by turning the equipment off and on, the user is encouraged to try to correct the interference by one or more of the following measures:

- Reorient or relocate the receiving antenna.
- Increase the separation between the equipment and receiver.
- Connect the equipment into an outlet on a circuit different from that to which the receiver is connected.
- Consult the dealer or an experienced radio/TV technician for help.

INDUSTRY CANADA  
CAN ICES-3 (B)/NMB-3(B)

## WEEE

The object area of  is the EU.

## WARRANTY

Aiphone warrants its products to be free from defects of material and workmanship under normal use and service for a period of 2 years after delivery to the ultimate user and will repair free of charge or replace at no charge, should it become defective upon which examination shall disclose to be defective and under warranty. Aiphone reserves unto itself the sole right to make the final decision whether there is a defect in materials and/or workmanship; and whether or not the product is within the warranty. This warranty shall not apply to any Aiphone product which has been subject to misuse, neglect, accident, power surge, or to use in violation of instructions furnished, nor extended to units which have been repaired or altered outside of the factory. This warranty does not cover batteries or damage caused by batteries used in connection with the unit. This warranty covers bench repairs only, and any repairs must be made at the shop or place designated in writing by Aiphone. This warranty is limited to the standard specifications listed in the operation manual. This warranty does not cover any supplementary function of a third party product that is added by users or suppliers. Please note that any damage or other issues caused by failure of function or interconnection with Aiphone products is also not covered by this warranty. Aiphone will not be responsible for any costs incurred involving on site service calls. Aiphone will not provide compensation for any loss or damage incurred by the breakdown or malfunction of its products during use, or for any consequent inconvenience or losses that may result.







<https://www.aiphone.net/>

AIPHONE CO., LTD., NAGOYA, JAPAN

Issue Date: Dec.2019 © P1219 MQ 62158