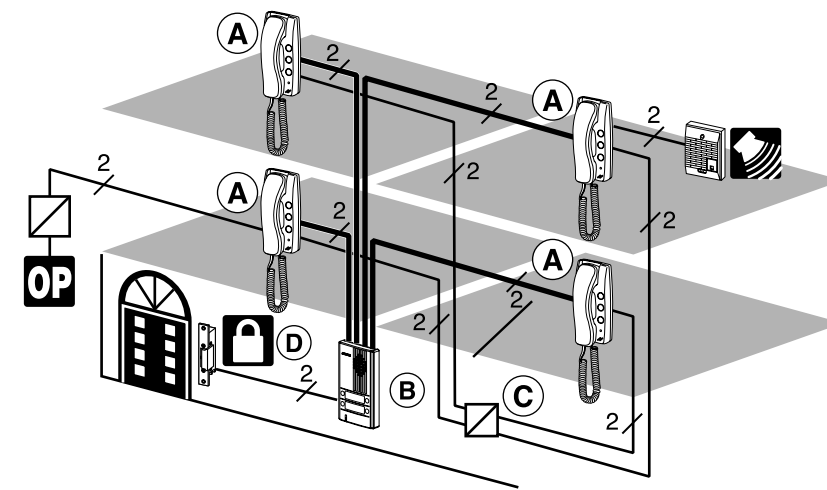
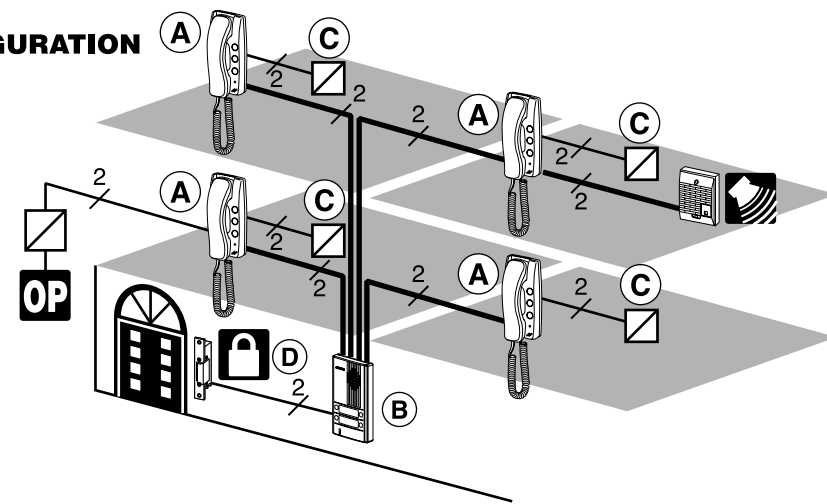


## SYSTEM CONFIGURATION



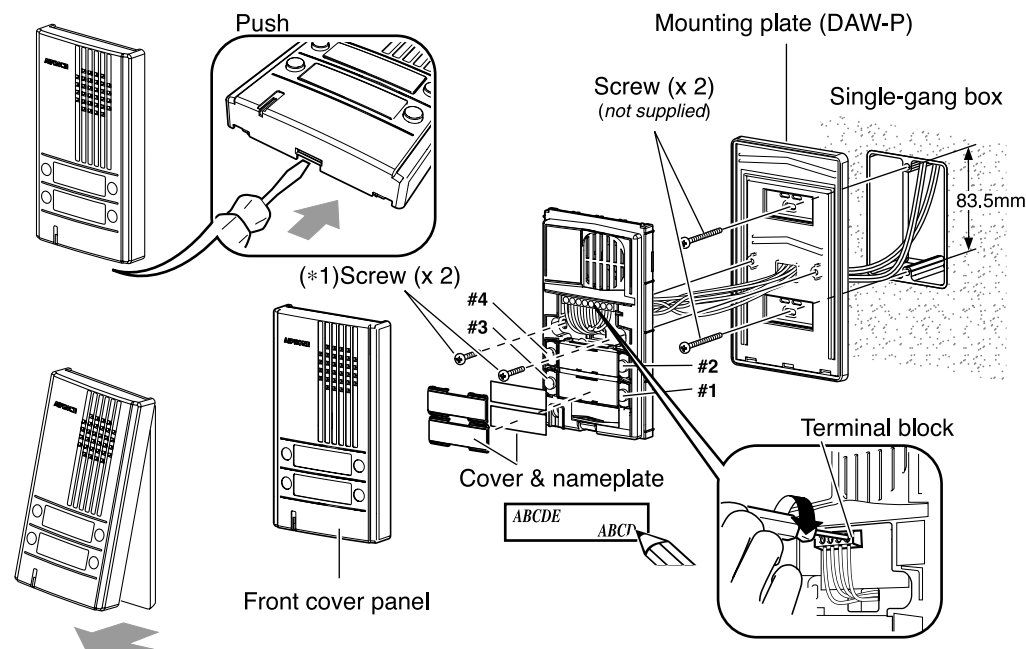
OP OPTION

### PACKAGE CONTENTS

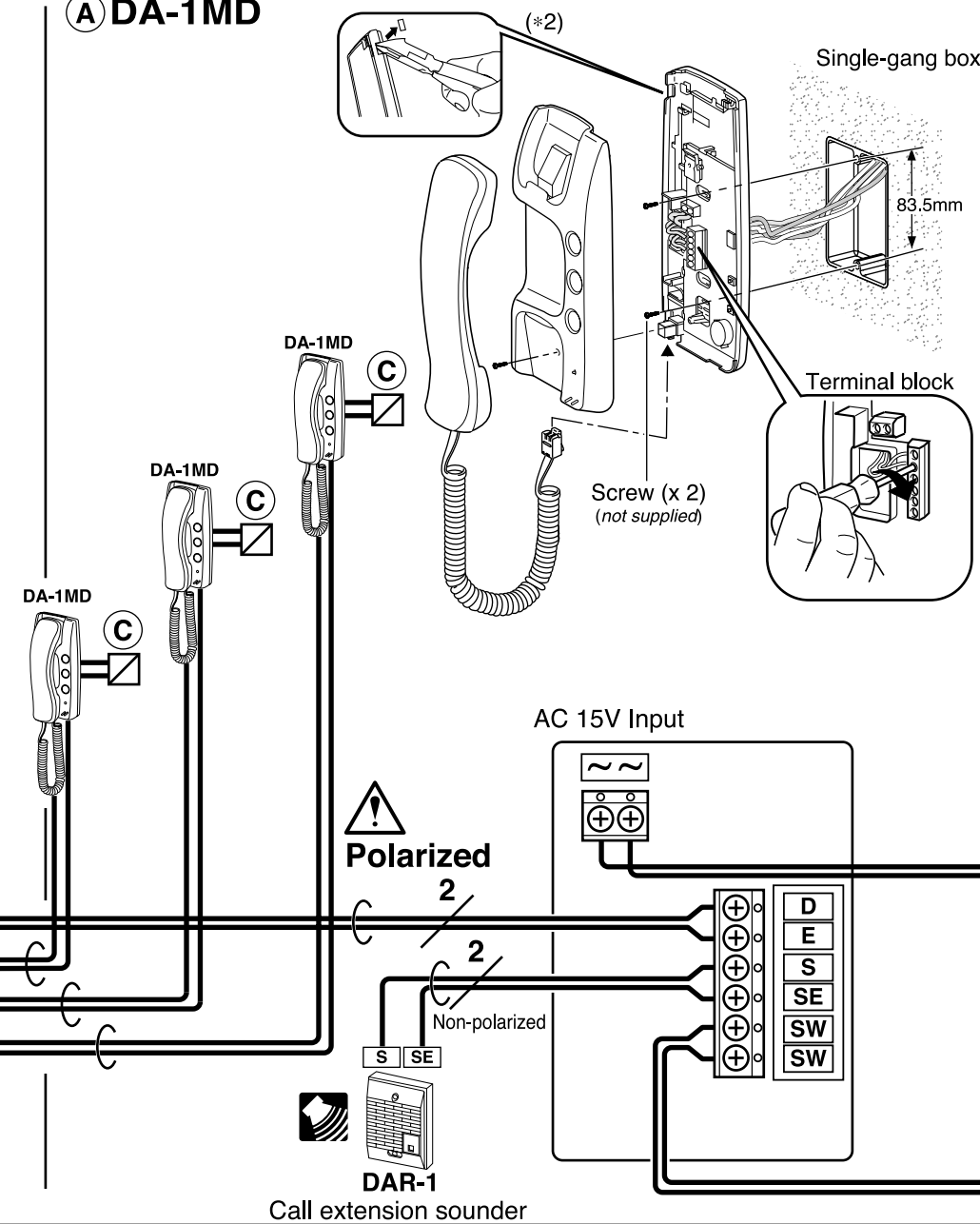
- DA-2DG or DA-2DS.  
DA-4DG or DA-4DS.
- Packet of wood screws  
(for mounting DA-1MD on wall)
- INSTALLATION & OPERATION MANUAL

	ø0.6mm	ø0.8mm	ø1.0mm
① ← ② — ③ → ④	110m	200m	310m
① ↔ ④	55m	100m	155m

## ② DA-2DG, DA-2DS, DA-4DG, DA-4DS

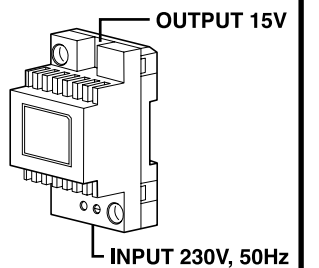


## ① DA-1MD

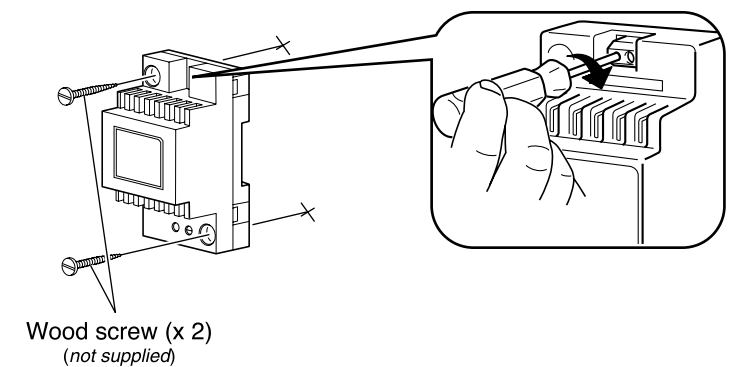


## Power supply

### ③ PT-1211DR



### PT-1211DR Mounting on wall directly



**Door release:**  
EL-9S or others  
(AC 16V, more than 20Ω)

**DA-2DG, DA-2DS, DA-4DG, DA-4DS:**  
L, L: for door release  
D, E: for DA-1MD  
(\*1) Screw (x 2)  
supplied with DAW-P

**DA-1MD:**  
D, E: for door station  
S, SE: for call extension sounder  
SW, SW: Dry-closure contact  
(18V, 40mA) for user-optional function  
(\*2) Cut out a hole for surface cable run.

**Power supply:**  
 • Be sure to locate power supply in an electrical enclosure, and connect to a breaker with a contact separation of at least 3mm in each pole (Less than 16A).  
• Do not connect two power supplies to an AC 15V input.

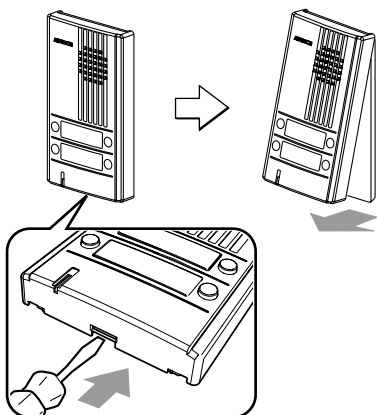
Gate, Light, Garage, etc.  
 Less than AC 18V, 40mA

**DOOR STATION MOUNTING PLATE****DAW-P****INSTALLATION INSTRUCTIONS**

This mounting plate is for mounting the DA-1, 2, and 4DS or DG on to a single-gang box.

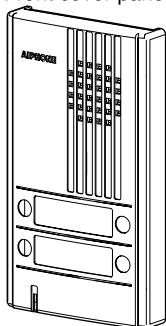
**■ MOUNTING**

To open, push to unlock the Front cover, and remove as shown.

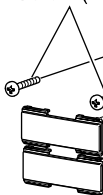


⚠ Be sure to use the screws supplied with DAW-P

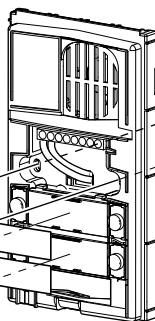
Front cover panel



Screw (x 2)



Screw (x 2)  
(not supplied)

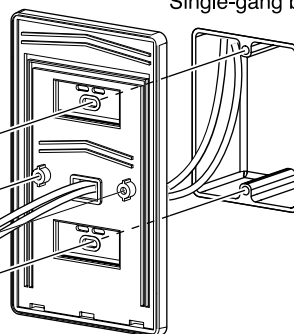


Door unit  
DA-1DS, G  
DA-2DS, G  
DA-4DS, G

**■ Package content**

- Mounting plate DAW-P
- Packet of screws
- INSTALLATION INSTRUCTIONS

Single-gang box

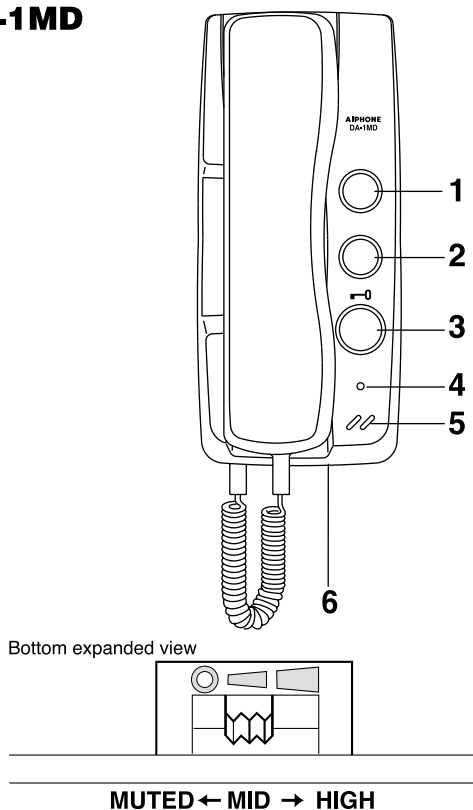


**DAW-P**  
Mounting Plate

1. Attach mounting plate (DAW-P) to single-gang box.
2. Mount door unit (DA-1, 2, 4DS or DG) on mounting plate.
3. Re-mount front cover panel on door unit.

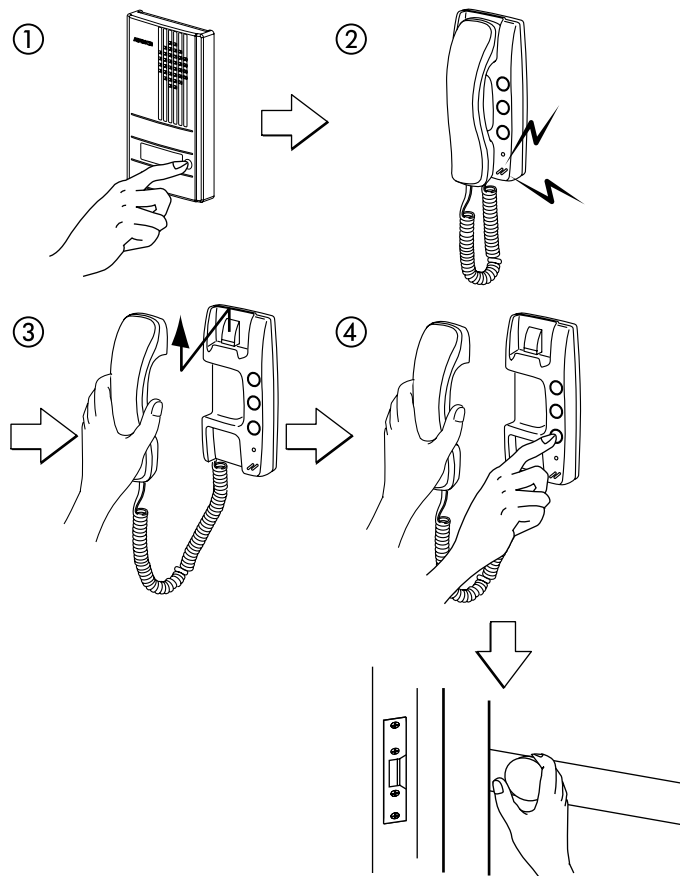
## NAMES & FUNCTIONS

### DA-1MD



- 1 Unused
- 2 SERVICE button (option)
- 3 DOOR RELEASE button
- 4 Call tone off LED  
Stays lit when the volume control is in MUTED position.
- 5 Call tone sounder
- 6 Call tone volume control

## OPERATIONS



- ① Depress and hold down to call
- ② Call tone rings
- ③ Lift handset and communicate
- ④ Depress and hold down to activate door release

## TECHNICAL PRECAUTIONS

### Ambient temperature:

DA-1MD: 0°C ~ +40°C (+32°F ~ +104°F)

### Asking for repairs:

If your DA system does not operate properly, ask qualified technician to repair it.

### Cleaning:

Clean the unit with a soft cloth dampened with neutral household cleanser. Never use any abrasive cleaner or cloth.

## SPECIFICATIONS

### Power source:

AC 15V, supplied from power supply

### Dimensions & weight:

200H x 89W x 63D(mm). 350g approx.  
7-7/8"H x 3-1/2"W x 2-1/2"D. 0.77 lbs.